



Legend

- Buildings

Parcel

Lot and Concession

RVCA Boundary

100yr Floodline

Regulation Limit

Regulation Limit including Allowances

Floodline

Geo-technical Hazard Limit

Meander Belt

Stable Slope

Top of Slope

Unstable Slope

Wetland
- Waterbodies**

Lake, River

River, Creek

**Evaluated Wetlands**

Evaluated-Provincial

Evaluated-Other

**Transportation**

Freeway

Expressway / Highway

Collector; Arterial

Local / Street

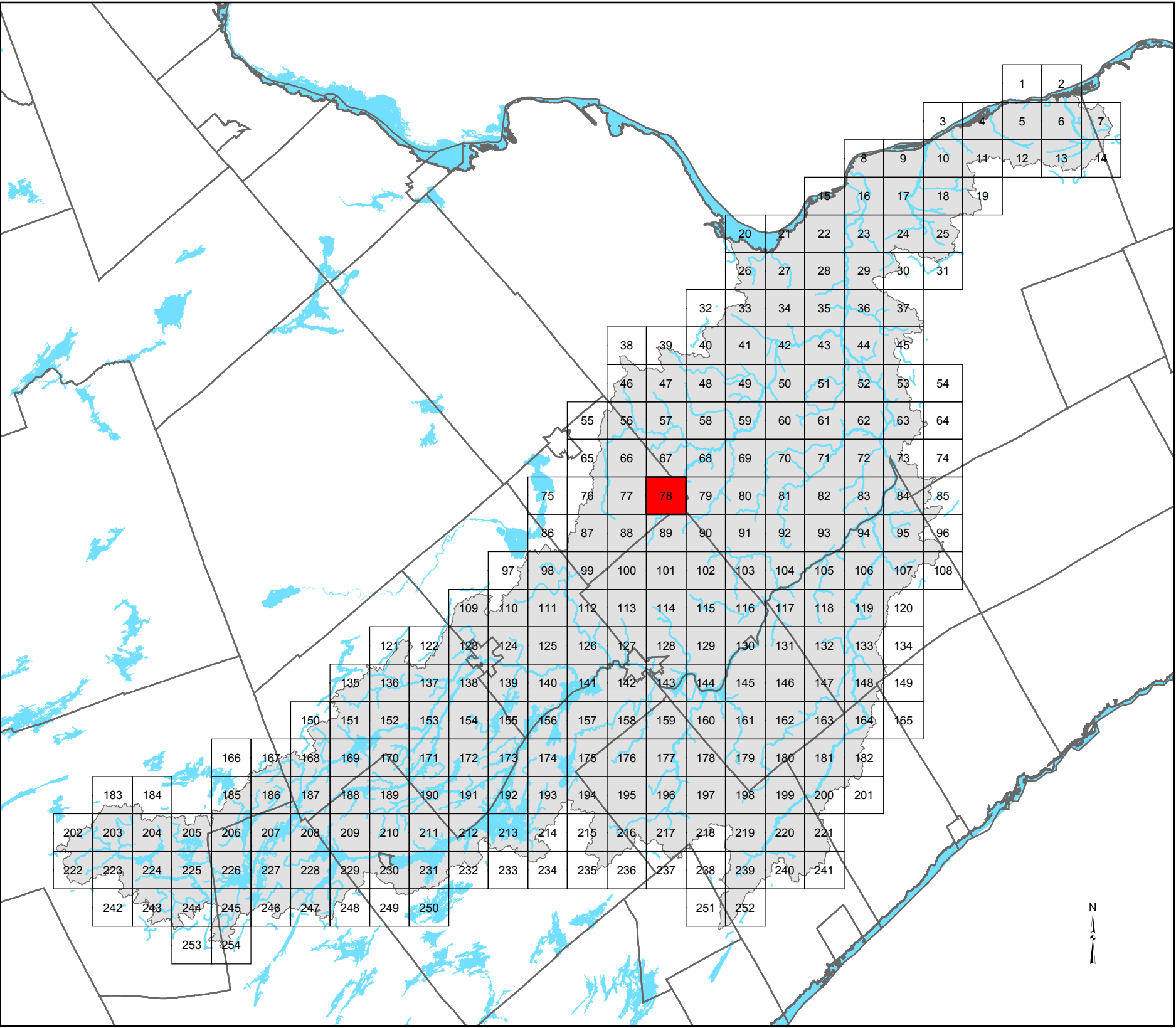
Private/Rural

Ramp

Rapid Transit

Service

SHEET INDEX



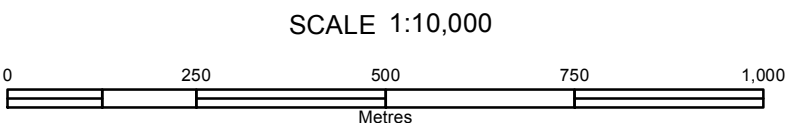
This map has been compiled from various sources and is for information purposes only. The Rideau Valley Conservation Authority takes no responsibility for, nor guarantees, the accuracy of all the information contained within the map.

Note 1: Hazardous lands, river and stream valleys, or wetlands may exist beyond the mapped extent of regulation limits, but their boundaries are not yet defined. Delineation of corresponding regulation limits will take place as additional supporting technical information becomes available.

These maps should be read in conjunction with a brief entitled "RVCA Methods for Delineation of Regulation Limits in Accordance with Ontario Regulation 97/04 (November 16, 2005)", as amended. For more information contact RVCA at (613) 892-3571.

RVCA Generic Regulation Limits Maps Created: November 2005

Base Data provided by Ontario Ministry of Natural Resources © Queen's Printer for Ontario, 2017.



Projection : Transverse Mercator  
Datum: North American Datum 1983

Scale of 1:10000 is only accurate when map plotted on ANSI D paper (56.86cmx86.36cm)

NO.	REVISIONS	DATE
1	Ontario Regulation 174/06 Approved	May 4 2006
2	Base Data Update (See Change Order #2)	Jan. 1, 2010
3	Wetland Change, Base Data Update (see Staff Report to Board of Directors)	Mar. 27, 2015
4		
5		

REGULATION LIMITS CREATED  
September 19, 2017

DRAWN BY  
RVCA GIS Services

(ONTARIO REGULATION 97/04)  
REGULATION FOR DEVELOPMENT, INTERFERENCE WITH WETLANDS,  
AND ALTERATIONS TO SHORELINES AND WATERCOURSES  
ONTARIO REGULATION 174/06

PLOT DATE: September 19, 2017  
FILE Z:\GIS\_Data\CA\_Data\Generic\_Regulations\RVCA\Development\RV5\KingsCreek\MapSheets\KingsCreek\_Regs\_OBM\_1to10K\_D\_DATA\_DRIVEN.mxd

SHEET NO.

78

OF

254