

FIG. A-5 - DOWNSTREAM END OF RICHMOND SWAMP



FIG. A-6 - ANOTHER VIEW OF RICHMOND SWAMP.  
NOTE RAILWAY LINE THROUGH SWAMP.

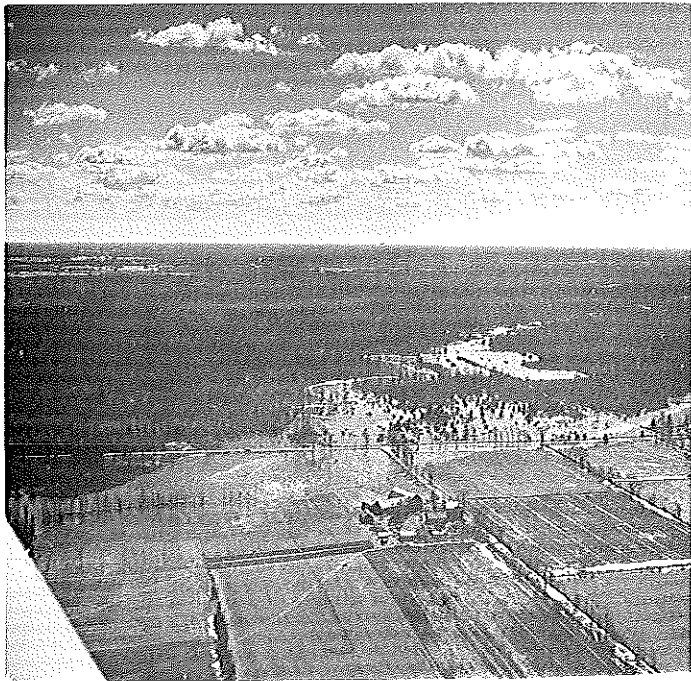


FIG. A-7 - DOWNSTREAM END OF ASHTON MARSH



FIG. A-8 - ANOTHER VIEW OF PART OF ASHTON MARSH

## JOCK RIVER IN FLOOD

MARCH 30, 1968

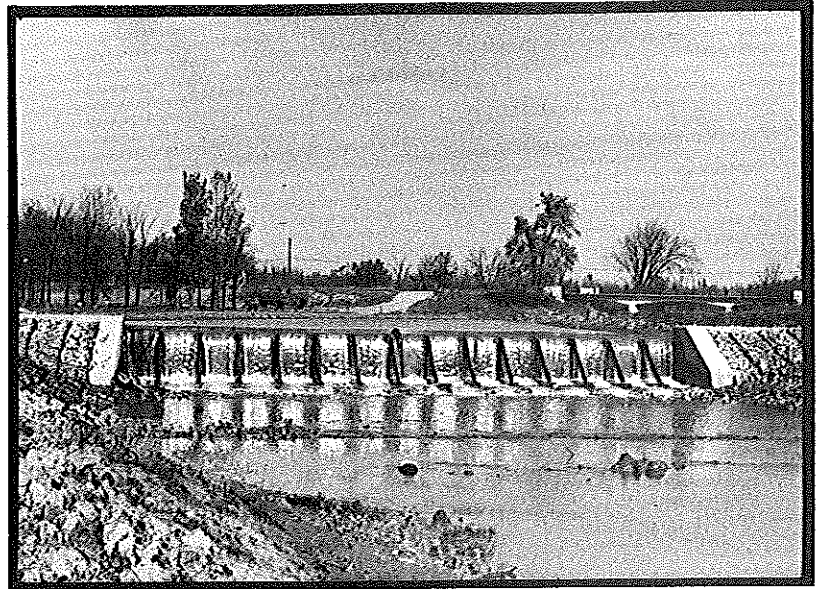
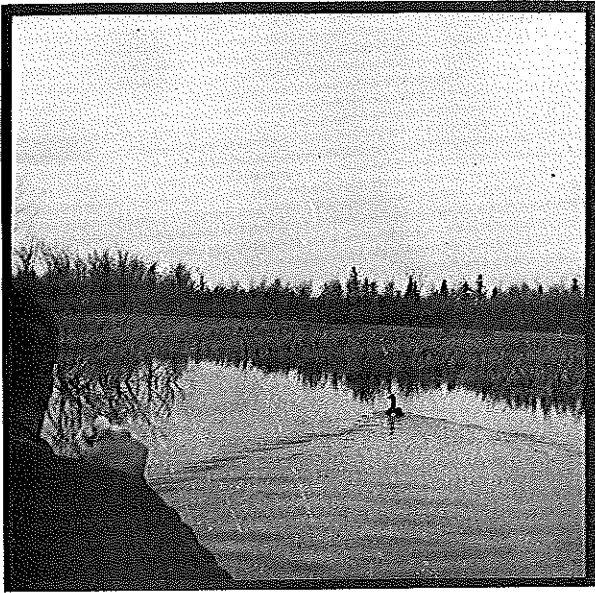


Fig. A-9 (upper left) Canada Goose leads canoe in Ashton Marsh

Fig. A-10 (left) Typical view from river in Ashton Marsh

Fig. A-11 (lower left) Beaver dam submerged by fall rains in Ashton Marsh

Fig. A-12 (above) Removable weir at Petrolia

Fig. A-13 (below) Plank walkway through swamp, Little Cataraqui R. Conservation Area

