



FIG. A-1 - ENTRY OF THE JOCK RIVER INTO THE RIDEAU RIVER



FIG. A-2 - DOWNSTREAM VIEW AT HEART'S DESIRE



FIG. A-3 - UPSTREAM VIEW TOWARDS TWIN ELM AT MILEAGE 6.2. (NOTE TREE-LINED BANKS)

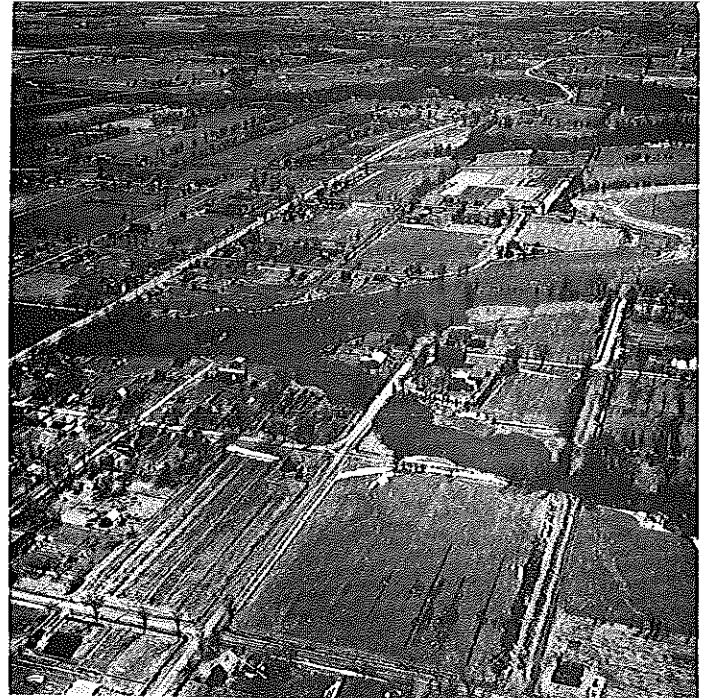


FIG. A-4 - PART OF VILLAGE OF RICHMOND, UPSTREAM OF BRIDGE

JOCK RIVER IN FLOOD

MARCH 30, 1968