

**2015 Board of Directors**

Andy Jozefowicz *Athens*

Dale McLenaghan *Augusta*

Sharon Mousseau *Beckwith*

Victor Heese *Central Frontenac*

No appointment *Clarence-Rockland*

Ray Scissons *Drummond/North Elmsley*

Lyle Pederson *Elizabethtown-Kitley*

Anne Barr *Merrickville-Wolford*

Vince Carroll *Montague*

Gerry Boyce *North Dundas*

Barclay Cormack *North Grenville*

Erin Greco *Ottawa*

Ed Hand *Ottawa*

Pieter Leenhouts *Ottawa*

Scott Moffatt *Ottawa*

Ralph Pentland *Ottawa*

Tom Scott *Ottawa*

Judy Brown *Perth*

Jeff Banks *Rideau Lakes*

Joe Gallipeau *Smiths Falls*

Pat Barr *South Frontenac*

Brian Campbell *Tay Valley*

Gerald Schwinghamer *Westport*

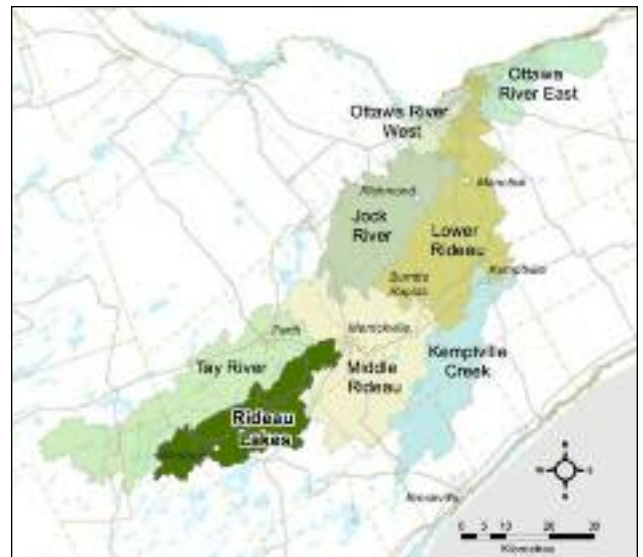
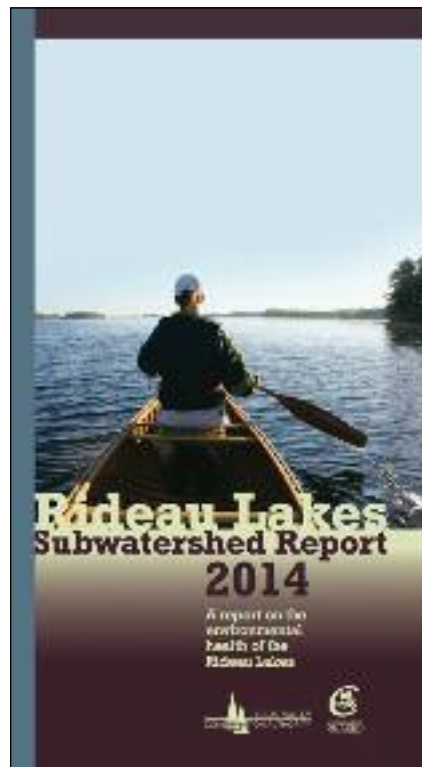
## Rideau Lakes Subwatershed Report Released

A concise report summarizing the health of the Rideau Lakes subwatershed looking at five indicators — water quality, water levels, forests, shorelines and wetlands — is now available. Residents and subwatershed municipalities including Drummond/North Elmsley, Rideau Lakes, South Frontenac, Tay Valley and Westport, now have a reliable set of baseline information for tracking future trends and a tool to enable sound decision-making about local natural resources.

Made up of a network of over 31 lakes and connecting streams, Rideau Lakes drains 455 square kilometres. The watershed is an integral part of the Rideau Canal National Historic Site, the Rideau Waterway Canadian Heritage River, the Rideau Canal UNESCO World Heritage Site, the Frontenac Arch Biosphere Reserve and Rideau Heritage Route.

Data shows that increasing development pressures continue to impact watershed health. Now is the time to focus our actions and look to make good decisions to preserve, enhance or maintain current conditions. The recommendations are not quick fixes, but rather set the stage for slow and steady improvements. The long-term health of the lakes will ensure long-term prosperity and well-being of the municipalities and their residents.

View the report online at [www.rvca.ca](http://www.rvca.ca) or contact us for a printed copy. Eight detailed catchment sheets that show monitoring results and highlight opportunities will be available soon ([martin.czarski@rvca.ca](mailto:martin.czarski@rvca.ca)).



**Upcoming Board of Director's Meetings —**

Thursday, April 23, 2015  
7:00 p.m. at the RVCA  
Conservation Centre  
in Manotick

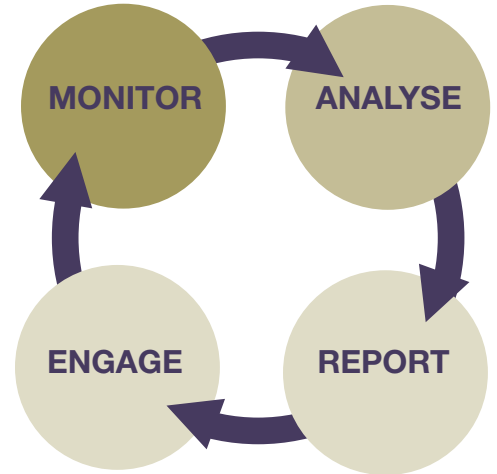
*Healthy  
environment,  
healthy  
economy,  
healthy  
communities*

## Subwatershed Reporting Taking the Science to Stewardship

Monitoring lakes, rivers and streams along with changing land uses (forests, wetlands and shores) in the Rideau watershed provides a wealth of information on the health of our watershed and is the scientific basis for all RVCA catchment and subwatershed reports.

Monitoring information also steers restoration, mitigation, rehabilitation and enhancement projects. It guides planning, Conservation Authority and municipal decision-making, policy-setting and much more.

RVCA takes the science and uses it to guide several programs and services that help achieve on-the-ground improvements.



**Private Land Reforestation Program** — offers a full service reforestation program to all landowners in the Rideau Valley Watershed. Subsidies, advice and assistance available. Contact: Scott at [scott.danford@rvca.ca](mailto:scott.danford@rvca.ca).


**Rural Clean Water Program** — offers financial and technical assistance to farmers and rural landowners undertaking projects to protect and improve water quality in the Rideau Valley Watershed. Contact: Derek at [derek.matheson@rvca.ca](mailto:derek.matheson@rvca.ca).


**Shoreline Naturalization Program** — offers technical guidance and financial assistance to waterfront property owners interested in naturalizing their shorelines. Contact: Andrea at [andrea.klymko@rvca.ca](mailto:andrea.klymko@rvca.ca).


**Ontario Regulation 174/06 (Development, Interference with Wetlands and Alterations to Shorelines and Watercourses)** — fair and consistent regulation of development and interference in hazardous and environmentally sensitive areas throughout the watershed. Contact Shelley at [shelley.macpherson@rvca.ca](mailto:shelley.macpherson@rvca.ca).


**Planning Services** — technical advice to municipalities for development applications they process under the *Planning Act* as well as general technical and environmental policy assistance and guidance. Contact: Glen at [glen.mcdonald@rvca.ca](mailto:glen.mcdonald@rvca.ca).


The RVCA is pleased to be at your service! Collectively, watershed municipalities and RVCA combine efforts and resources to provide exceptional environmental services. To learn more about our programs, visit our website at [www.rvca.ca](http://www.rvca.ca) or call our offices to connect with key staff.


 Box 599  
3889 Rideau Valley Dr.  
Manotick ON  
K4M 1A5


 613 692 3571  
800 267 3504

 613 692 0831

 [postmaster@rvca.ca](mailto:postmaster@rvca.ca)

 [www.rvca.ca](http://www.rvca.ca)

 [www.facebook.com](http://www.facebook.com)

 [www.twitter.com](http://www.twitter.com)

### Recommended Reading

**Municipal World**, March 2015 – *Managing Rain Where it Falls*

With urban stormwater management systems often strained to the brink, new green infrastructure solutions can help ease the burden in a way that is both environmentally friendly and financially sustainable.