

Barrhaven Conservancy

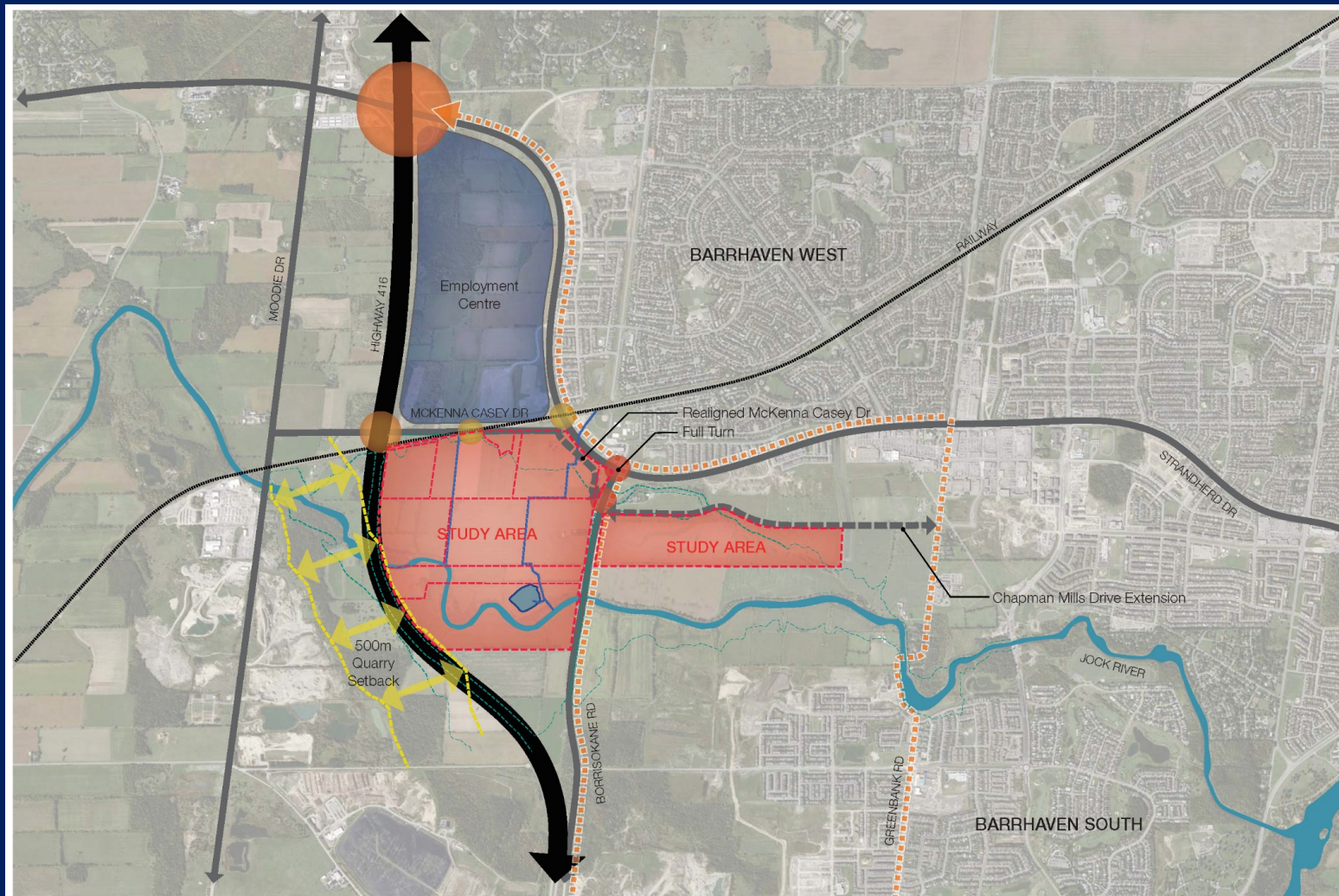
RV5-44/19

Executive Committee Hearing O.Reg 174/06

November 7, 2019

Barrhaven Conservancy

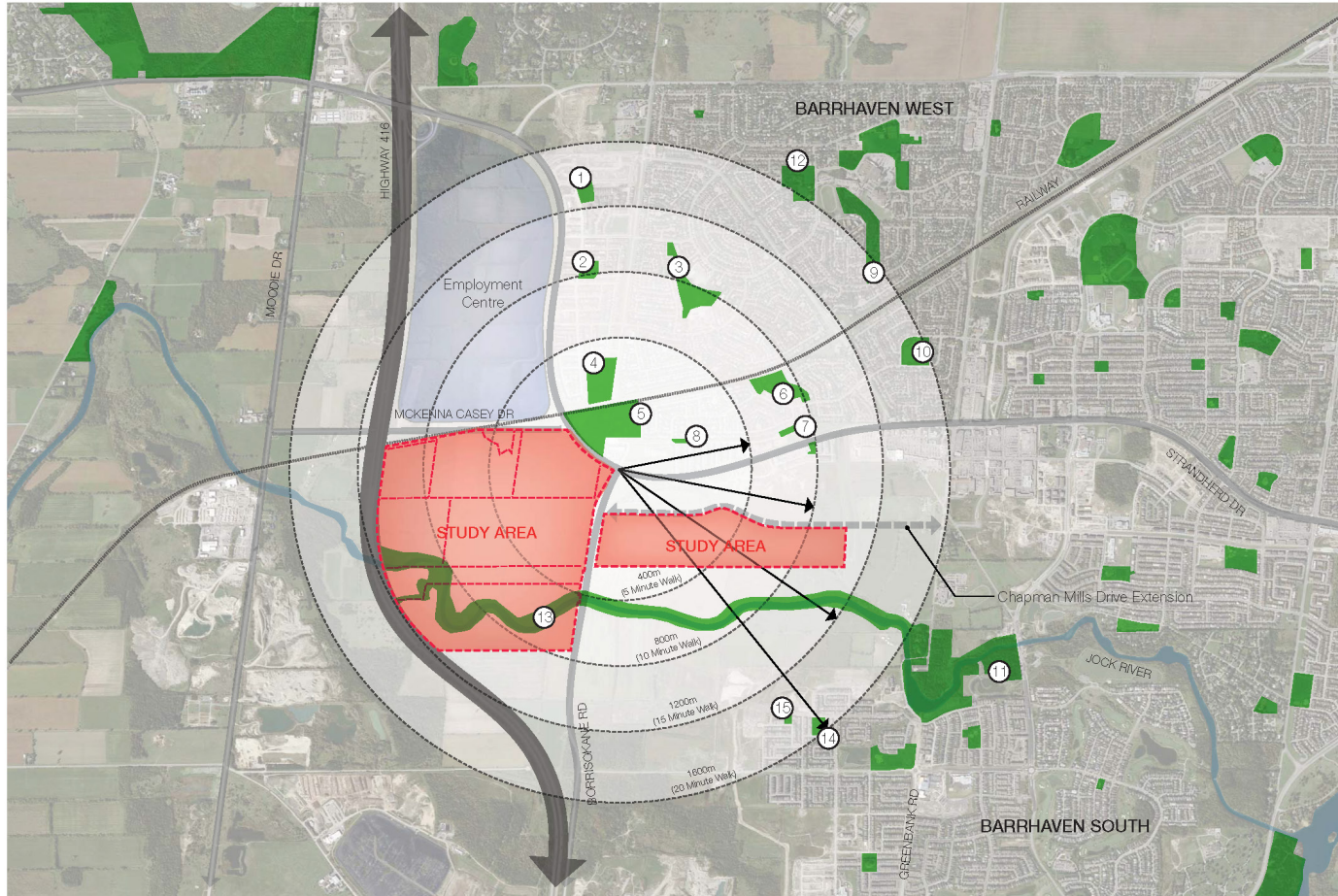
- Land is within existing urban boundary
- Transportation network in place. Public rapid transit corridor.
- Municipal services for water and sanitary at boundary with capacity
- Supports re-naturalization of Jock River corridor
- Protection of rural lands supporting forests, wetlands and agricultural lands.



Legend

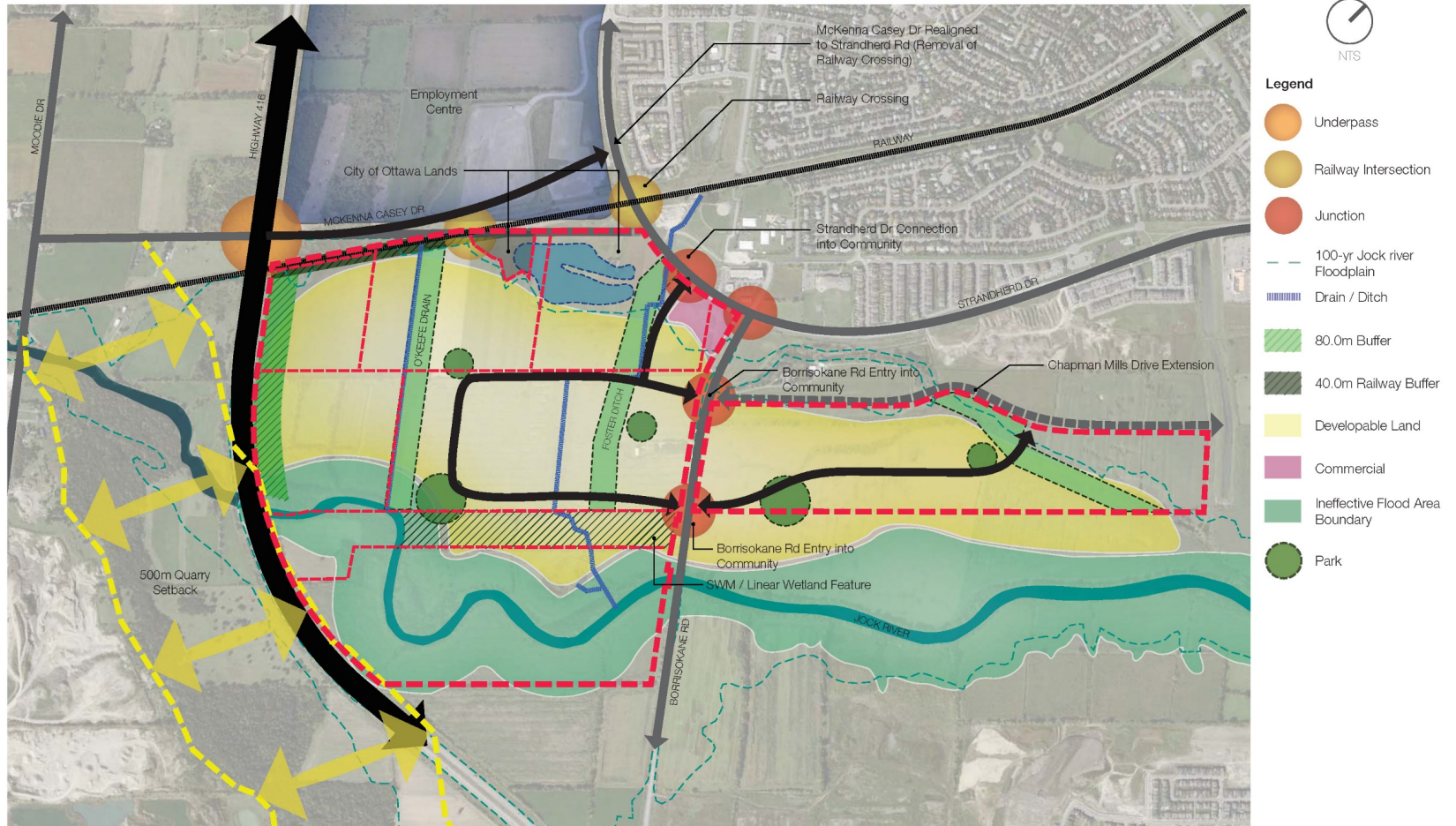
- Interchange
- Underpass
- Railway Intersection
- Junction
- Floodline
- Route to Interchange

adjacent parks •



- NTS
- Legend**
- Park
 - ① Hibiscus Park
 - ② Fosterbrook Park
 - ③ Waybridge Park
 - ④ Cobble Hill Park
 - ⑤ Cobble Hill Park
 - ⑥ Houlahan Park
 - ⑦ Harthill Way Linear Park
 - ⑧ Fraser Fields Parkette
 - ⑨ Burnette Park
 - ⑩ Moloughney Park
 - ⑪ Half Moon Bay District Park
 - ⑫ Mowat Farm Park
 - ⑬ Jock River Vegetation

concept diagram •



Purpose

- Implement OPA 212 approved unanimously at council DATE to permit residential development north of the Jock River
- Awaiting floodplain mapping updates as per OPA 212 to determine extent of development
- RVCA application to establish development land boundary through site alteration works DATE
- Review has included extensive process including a third party review.

Policy Context

- 2014 Provincial Policy Statement
- City of Ottawa Official Plan
- Nepean Secondary Plans
- RVCA Local Development Policies
- MNR Rivers and Streams Technical Guide, 2002

The application conforms to ALL APPLICABLE policy.

Background

- Consultation with Conservation Authority and City of Ottawa 2016
- OPA application October 2017
- OPA application approved April 2018
 - OPA required review of Jock River floodplain mapping by RVCA and City of Ottawa, in consideration of JFSA work
- Consultation and technical work with RVCA for following 14 months
- RVCA application July 16, 2019

Summary of Proposal

- Filling of Jock River floodfringe areas within existing urban boundary;
- Offsetting cut to mitigate any potential impacts;
 - Extensive modelling, interdisciplinary study and Peer Review.
- Restoration of Jock River Riparian Corridor;
- Addition of Wetland areas (RVCA Priority);
- Completion of Barrhaven Community and reduction in lands required for residential expansion beyond Urban Boundary.