



Around the Rideau

Environmental Information For Municipalities In The Rideau Valley

July | August 2007

Motts Mill Dam Review

Working with Ducks Unlimited, the RVCA is conducting an operational review of the Motts Mill Dam in Elizabethtown-Kitley Township. The review will:

- decide on the water levels to be maintained behind the dam for public health and safety
- respect the riparian rights of local landowners
- consider ways to protect wildlife habitat in the provincially significant Hutton Creek Wetland
- look at alternative dam designs and identify a preferred design that will enable RVCA to control the water levels as required

Don't hesitate to call MARTIN at ext. 1163 or martin.czarski@rideauvalley.on.ca for more.

Fish Habitat and the Proposed Riverside South High School

Key partners in the Riverside South High School project review — Ottawa Catholic School Board (OCSB), City of Ottawa and RVCA — have concluded that planning for the Riverside South High School will proceed and fish habitat on tributaries of Mosquito Creek will be protected. The OCSB will investigate how stormwater management, site grading and natural buffers can be applied to provide necessary protection for fish habitat on and adjacent to the site. The

RVCA, the City, the OCSB and the developer will continue to work cooperatively to develop a plan for a September 2009

opening. The community gets both a new school and a healthy stream and the entire Rideau

watershed is better for it. Call GLEN at ext. 1133 or glen.mcdonald@rideauvalley.on.ca.

Rideau Ferry Yacht Club Regatta

Rideau Ferry Yacht Club Conservation Area will be the site for the August 18 and 19 regatta hosted by the Rideau Ferry Yacht Club (RFYC). There will be a variety of vintage and antique boats involved in the event — including older inboard boats for flybys at the show and smaller vintage outboard boats that will race. Authority staff has been working with RFYC to accommodate the event and prepare a thorough event agreement. The agreement ensures that there is proper liability insurance to cover racing and other elements of the event and the protection of conservation and municipal interests. KRISTY has more at ext. 1178 or kristy.gilles@rideauvalley.on.ca.

Local Source Protection Committee Taking Shape

Nominations are now closed for the position of Chair of the Mississippi-Rideau Source Protection Committee (SPC). A recommendation will be submitted to the Minister of Environment indicating which applicant the Mississippi-Rideau feels will make the best Chair. We expect the Minister to appoint the Chair by the end of August. Also in August, watch for newspaper ads and web site postings outlining the draft make-up of our SPC and how to apply for a seat. The public will be invited to comment on the proposed make-up. More info from SOMMER ext. 1147 or sommer.robertson@mrsourcewater.ca

And the Award Goes to . . .

Congratulations to Susan O'Brien-MacTaggart and the Bobs and Crow Lakes Association who were awarded the 2006 RVCF Conservation Award. Ms. O'Brien-MacTaggart and her team of lake landowner volunteers received top honour for the completion of their lake management plan called *"Imagine...A Stewardship Plan for Bobs and Crow Lakes."*

The plan outlines realistic ways the community can improve the health of their lake area. The plan will have positive environmental effects not only on the two lakes directly involved but on the entire Tay Valley watershed. It took four years of work and is only the second such plan to exist in Eastern Ontario. More information call CHARLES at ext. 1116 or charles.billington@rideauvalley.on.ca.

Meisel Woods Bridges the Gap!

This summer, enjoy the new foot/pedestrian bridge at Meisel Woods Conservation Area. The bridge links up two sections of a five-kilometre trail that provides a wonderful walking experience as well as health and recreational benefits. The bridge completes a recreational/education forest trail started in 2004 with assistance from Crow Lake community volunteers and from the Community Foundation of Greater Kingston. The Rideau Valley Conservation Foundation is delighted to be able to offer this quality of safe, outdoor, family experience in South Frontenac. Big thanks to the Community Foundation of Greater Kingston and the Davies Charitable Foundation for their kind donation of \$10,000 that made this community and environmental project a reality. Call CHARLES at ext. 1116 or charles.billington@rideauvalley.on.ca.

"We will study the existing site plan to incorporate mitigation measures suggested by the City and the RVCA to protect the sensitive areas. Everyone agrees that it's important to move forward with construction of our new school as quickly as possible."

Fred Chrystal, OCSB Superintendent

"This is very good news for our community. I am very pleased that the Conservation Authority has identified opportunities that will allow the high school to move forward."

Steve Desroches, Gloucester South Nepean Councillor



Hikers enjoying Meisel Wood Conservation Area's trails.

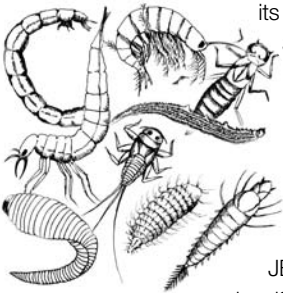


Summer Stream Flows

July has followed a relatively dry May (65 percent of normal) and a drier June (60 percent of normal) with over 50 percent of normal precipitation by the middle of the month. Because of the previously dry conditions, it appears that most of the moisture has gone into the ground and has not made it to the streams. This is great for our lawns and the various farm crops but not so great for all the creatures in our rivers and streams where flows are well below normal for the time of year. The lake levels in the upper part of the watershed have steadily but slowly declined after the spring freshet but most of the dangerous shoals and rocks are still safely submerged. Stream flow and water level data are routinely collected and presented on our web page each Friday. For more, contact PATRICK ext 1110 or patrick.larson@rideauvalley.on.ca or see the data online at www.rideauvalley.on.ca under our "Showcased" items — Stream Flow Conditions in the Rideau Valley.

Hurray for Bugs!

The RVCA's Benthic Macroinvertebrate Sampling Program is in its ninth year. Bugs are great barometers of pollution. Some can tolerate pollution while others can't. By sampling stream-bottom invertebrates (caddisflies, damselflies, crayfish, aquatic snails and worms, etc), the program will determine changes in stream water conditions and levels of pollution over time. Aquatic invertebrates are sampled at 70 sites throughout the watershed in May and October. More information from JENNIFER at ext. 1108 or jennifer.lamoureux@rideauvalley.on.ca.



Lake Sampling

The RVCA monitors 40 key lakes in our valley — from Carnahan Lake, downstream to Lower Rideau Lake, and many lakes in between, such as Bobs, Wolf, Green and Fermoy Lakes, to name a few. Nitrogen, phosphorous, bacteria, dissolved oxygen, temperature, pH, conductivity, clarity and invasive species are monitored. The lakes are sampled three times during the summer and fall. Data collected can act as an early warning system to identify trends or problems in water quality. Call PATRICK at ext. 1110 or patrick.larson@rideauvalley.on.ca.

Fun at Foley

There's lots of family fun at Foley Mountain. Join us every Thursday morning from 10 am to 11:30 a.m for outdoor nature programs. Programs include activities, hikes, games, arts and crafts. There's something for everyone. Programs are free with your Day Pass. For a complete schedule, contact Foley Mountain's Interpreter REBECCA WHITMAN at 613-273-3255 or rebecca.whitman@rideauvalley.on.ca for more details.

RVCA Headquarters Update

Work is proceeding well with our new office building. Exterior stone work is complete, as well as, pouring the ground floor slab on grade. Stud wall framing is underway and we are nearing completion of the roofing work. Installing the windows and the remaining exterior siding will start soon. The building should be closed in by August and work will start in earnest on the interior. The target date for completion is the end of October.

The Rideau Valley Conservation Foundation is wrapping up their fundraising campaign. We are offering our business colleagues the opportunity to be part of this exciting "LEED Certified" Rideau Valley Conservation Centre. There is still time to get involved and potential sponsors can contact the RVCA for information on sponsorship levels and recognition guidelines for donors.

RVCA staff are already starting to plan for the move. There are lots of details when it comes to moving from seven buildings into one new building. The plan is to move our staff during the second week of December. More information and announcements will follow regarding the details and timing of the RVCA move. Call CLIFF ext. 1134 or cliff.craig@rideauvalley.on.ca.



Conservation at the 2007 IPM

From September 18-22, 2007 Leeds-Grenville County (Crosby area) is hosting this year's International Plowing Match. This event will feature a dynamic "Conservation Tent." This year's tent theme is "Living With Nature" and will highlight best management practices for farmers and rural landowners. Twenty-five exhibitors, woodlot tours, special presentation and more. For lots of information contact MARTHA at ext. 1136 or martha.bradburn@rideauvalley.on.ca



Around the Rideau

Rideau Valley Conservation Authority
Office de protection de la nature de la
vallée de la rivière Rideau

Box 599, Manotick, Ontario K4M 1A5
 692-3571 or 1-800-267-3504 www.rideauvalley.on.ca

Around the Rideau circulation has risen to 3,800 Heads of Council, Councillors, senior municipal and provincial staff, interested persons and the media throughout the 18 municipalities in the Rideau Valley watershed courtesy of our friends at:



The Base Mapping Co. Ltd, Nepean (613) 723-8100

Providing Conservation Authorities with digital topographic mapping for flood plain management.

Bell Baker, Barristers and Solicitors (613) 237-3444

Effectively providing quality legal services in Eastern Ontario for over 40 years.

CH2MHill Canada Limited, Ottawa (613) 723-8700

Providing excellence in environmental engineering, planning and science across Canada.

Robinson Consultants Inc., Kanata (613) 592-6060

Able to assist you in optimizing your municipal works and related operations in an environmentally-friendly, cost-effective way.