



A NEWSLETTER FOR MUNICIPAL COUNCILLORS  
September 2008

**Board of Directors**

- Alan Arbuckle, Chair
- Ken Graham, Vice-Chair
- John H. Miller, Past-Chair
- Dwight Bennett
- Glenn Brooks
- David Crowley
- Steve Desroches
- Clive Doucet
- Ed Hand
- Michael McEwen
- Maria McRae
- Cathy Willoughby

**Upper Advisory Board**

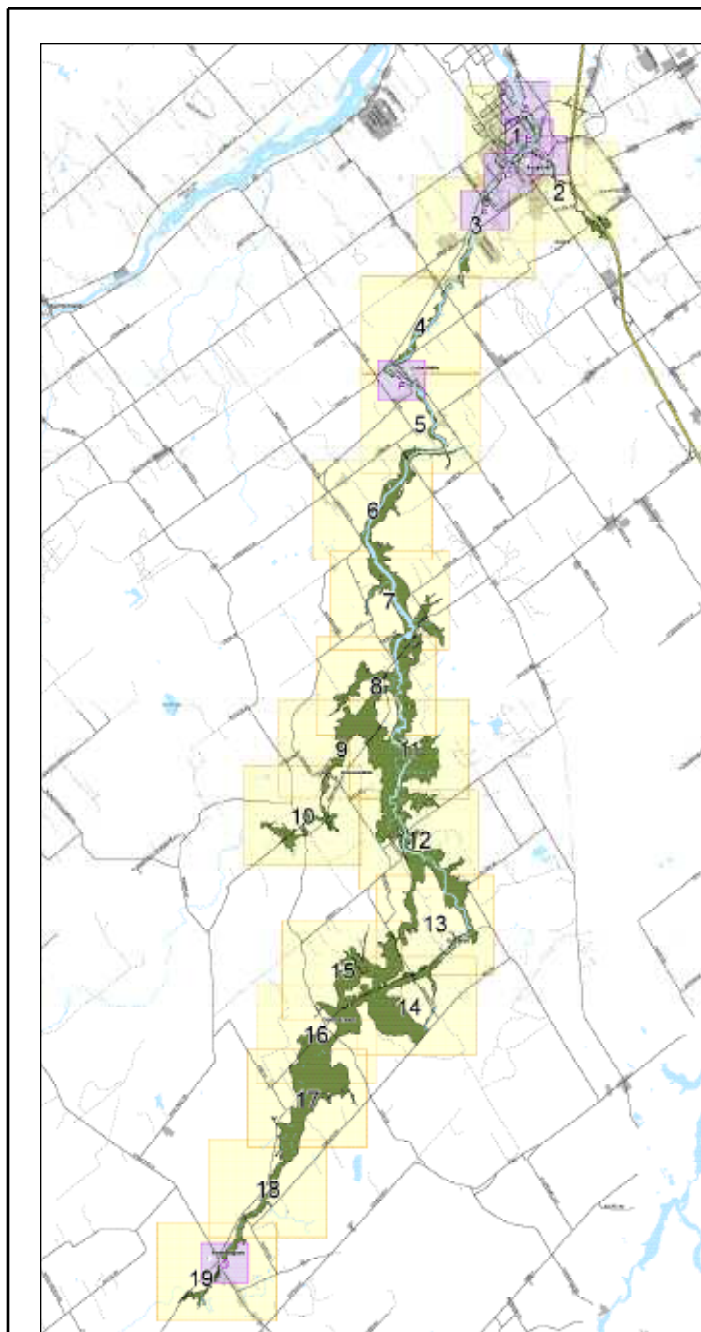
- Central Frontenac* John Purdon
- Drummond/North Elmsley*
- Michael McEwen, Vice-Chair
- Perth* David Crowley, Vice-Chair
- Rideau Lakes* Rob Dunfield
- South Frontenac* Larry York
- Tay Valley* John H. Miller, Chair
- Westport* Bradley Wing

**Middle Advisory Board**

- Athens* Andy Jozefowicz
- Augusta* Adrian Wynands
- Beckwith* John Campbell
- Clarence-Rockland* vacant
- Elizabethtown-Kitley* Chris Babcock
- Merrickville-Wolford*
- Cathy Willoughby, Chair
- Montague* Larry O'Grady
- North Dundas* Estella Rose
- North Grenville*
- Dwight Bennett, Vice-Chair
- Smiths Falls* Ken Graham, Vice-Chair

**City of Ottawa**

- Alan Arbuckle
- Glenn Brooks
- Steve Desroches
- Clive Doucet
- Ed Hand
- Maria McRae



**Kemptville Creek and Barnes Creek Flood Risk Maps**

Come and see the new and updated flood risk maps for Kemptville Creek and Barnes Creek at our open house on Wednesday, November 12, 2008 from 3:30 to 8:30 pm at the Maplewood Community Hall, 92 Maplewood Avenue, Oxford Mills. RVCA engineers and GIS staff created the new maps using recent data and advanced, industry-standard engineering and mapping methods; however, in any flood risk-mapping project, there is some uncertainty and approximations. The RVCA wants to minimize the uncertainty by making use of every bit of information that we can obtain about the historical behaviour of the Kemptville Creek and Barnes Creek. Residents and landowners along the river may have anecdotal or documented information such as photographs or journal entries of their observations during past high water events. That kind of information can be very useful for evaluating the "reasonableness" of the flood lines shown on the maps and the study team is anxious to review any past flood evidence that people wish to share (ferdous.ahmed@rvca.ca).

*Updated mapping for the entire length of Kemptville Creek and Barnes Creek.*



## Aiming for 75,000 Trees

The City of Ottawa and its partners (Ottawa Stewardship Council, Mississippi Valley Conservation, Rideau Valley Conservation Authority and South Nation Conservation) are hoping to plant 75,000 trees in spring 2009 through the Green Acres Program. Rural landowners with at least one acre of land and an interest in planting at least 500 trees should call the RVCA's LandOwner Resource Centre (613-692-3571 or 1-800-267-3504 ext. 1128 or ext. 1132) – special incentive grants may be available to cover seedlings, site preparation and planting costs.

Our tree planting programs offer:

- Customized tree planting programs that suit your needs
- Subsidized costs through partner funding
- Site visits by qualified forestry staff
- Planting plans
- Ordering and handling of tree seedlings
- Site preparation
- Tree planting and tending
- Survival assessments
- Cold storage
- Trucking
- Refill planting and future tending

## Get Snappin'

Help spread the word! Local Primary and Secondary school students are encouraged to get snapping with the Friends of the Jock River Photo Contest. The subject of the competition is "Appreciation of the Jock River," which means that the Jock River, its tributaries or wetlands have to be the main subject of the photograph or have a recognizable relationship with the main subject. Photographs may be submitted between September 20, 2008 and May 19, 2009, to allow a full range of fall, winter and spring scenes. To learn more visit [www.jockriver.org](http://www.jockriver.org).

## Flood Prep – Now's the Time

It's hard to think of cold, wet weather, but for our shoreline residents now is the time to prepare for a spring flood! It is the RVCA's job to make people aware of flooding from our rivers, creeks and streams, but it is up to each landowner to develop a flood plan specific to their property and their needs.

Here are some tips on how your municipal residents can prepare for a flood and develop a flood plan:

- contact an RVCA Information Specialist and find out if you are in the floodplain, understand your property and how it will be impacted by high waters on rivers, streams and creeks (613-692-3571 ext. 1128 or 1132)
- familiarize yourself with flood warnings and what they mean (visit [www.rvca.html/flood/index.html](http://www.rvca.html/flood/index.html))
- join the RVCA's flood advisory e-mail list for up-to-date flood messages (e-mail [diane.downey@rvca.ca](mailto:diane.downey@rvca.ca))
- learn about what your municipality will do to assist residents in times of high water
- think about what you would want to move to safety during a flood
- consider if you are willing to sandbag your property – who would do it? Where would you get bags and sand? etc.
- prepare an emergency plan for your family (safe exits, meeting places, emergency contacts, disaster supplies, etc.)
- prepare an emergency kit of essential items (copies of home insurance documents, batteries, radio, bottled water, etc.)
- know how to turn off your gas, electricity and water supplies

RVCA Meeting Dates,  
Board of Directors and  
Advisory Board Agendas,  
Minutes (after approval),  
*Watershed Briefs* and  
Media Releases are  
available on our website  
at [www.rvca.ca](http://www.rvca.ca).

✉ Box 599  
3889 Rideau Valley Dr.  
Manotick ON  
K4M 1A5

☎ 613 692 3571  
800 267 3504

☎ 613 692 0831

✉ [postmaster@rvca.ca](mailto:postmaster@rvca.ca)

🌐 [www.rvca.ca](http://www.rvca.ca)