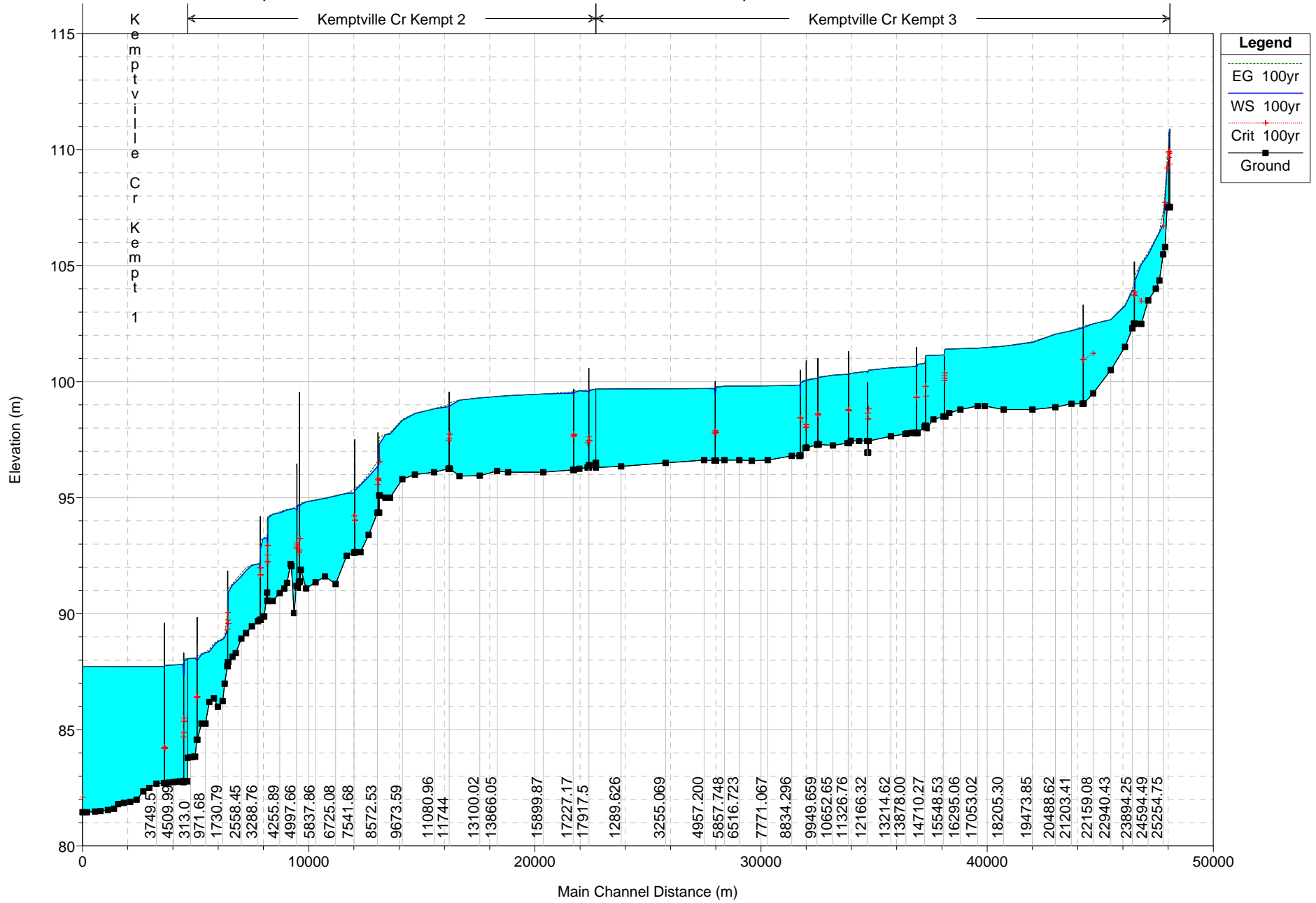


Appendix A
HEC-RAS Model Output

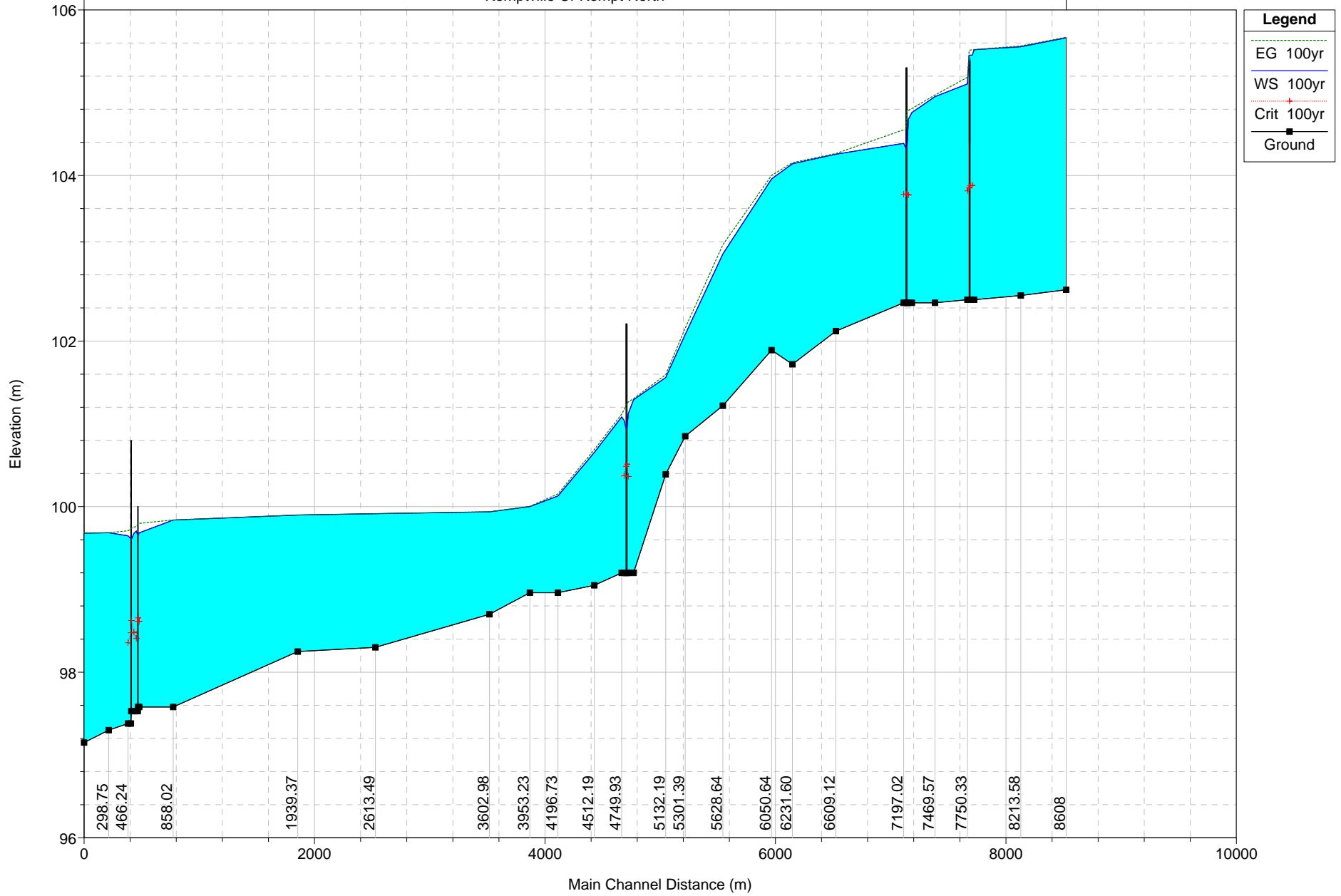
REVISION 1 – June 3, 2011

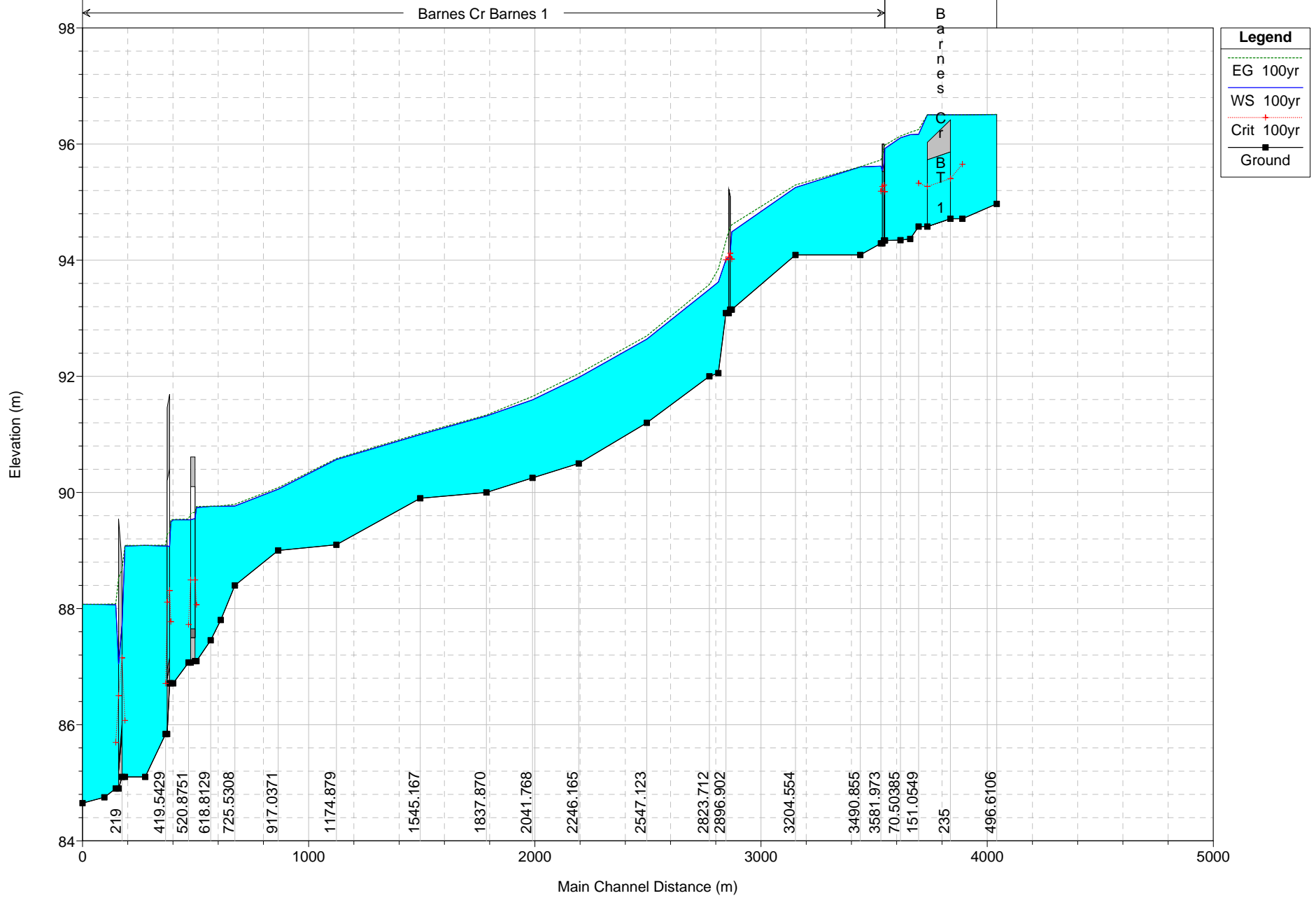
Longitudinal Profiles

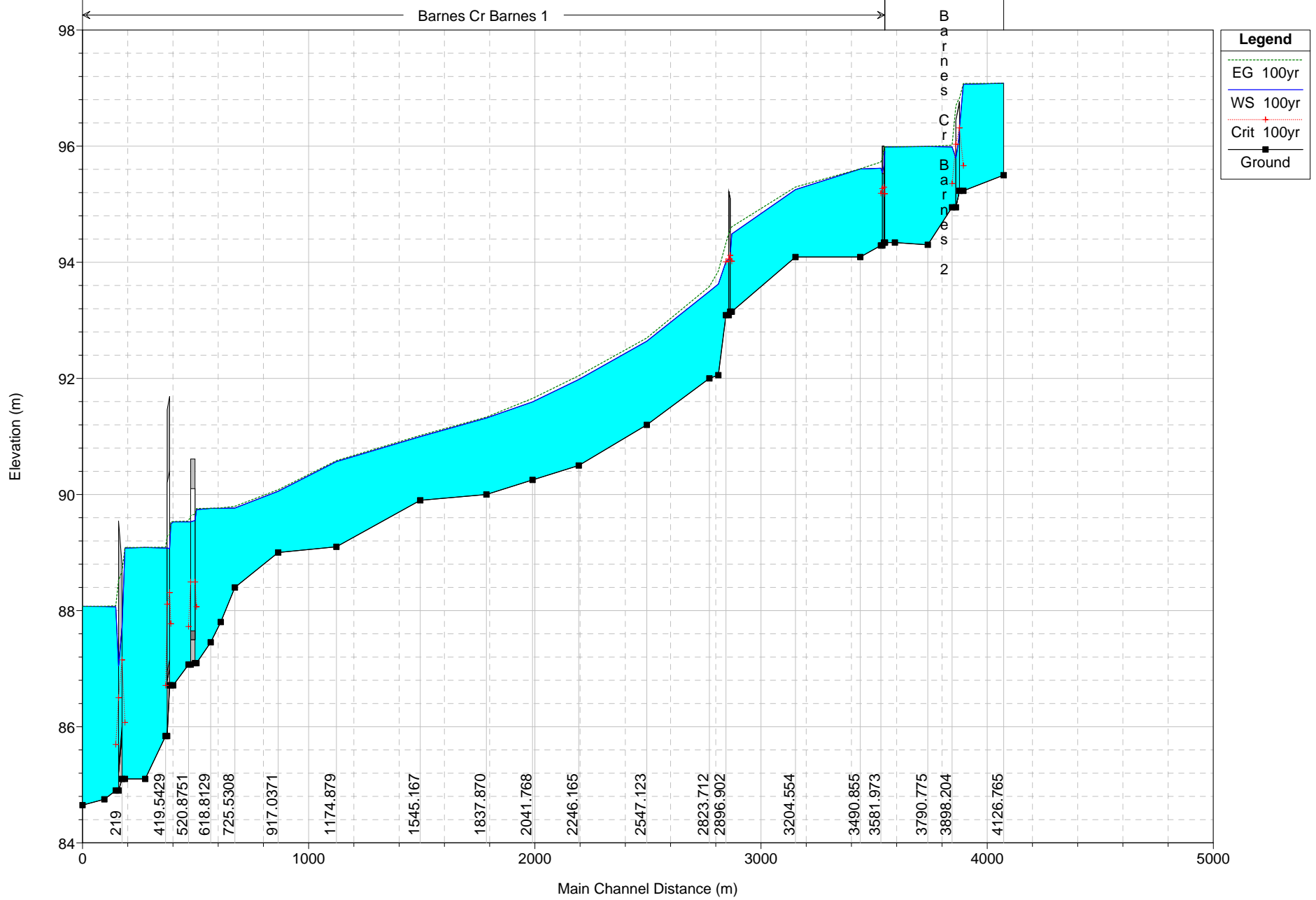
Cross-Sections

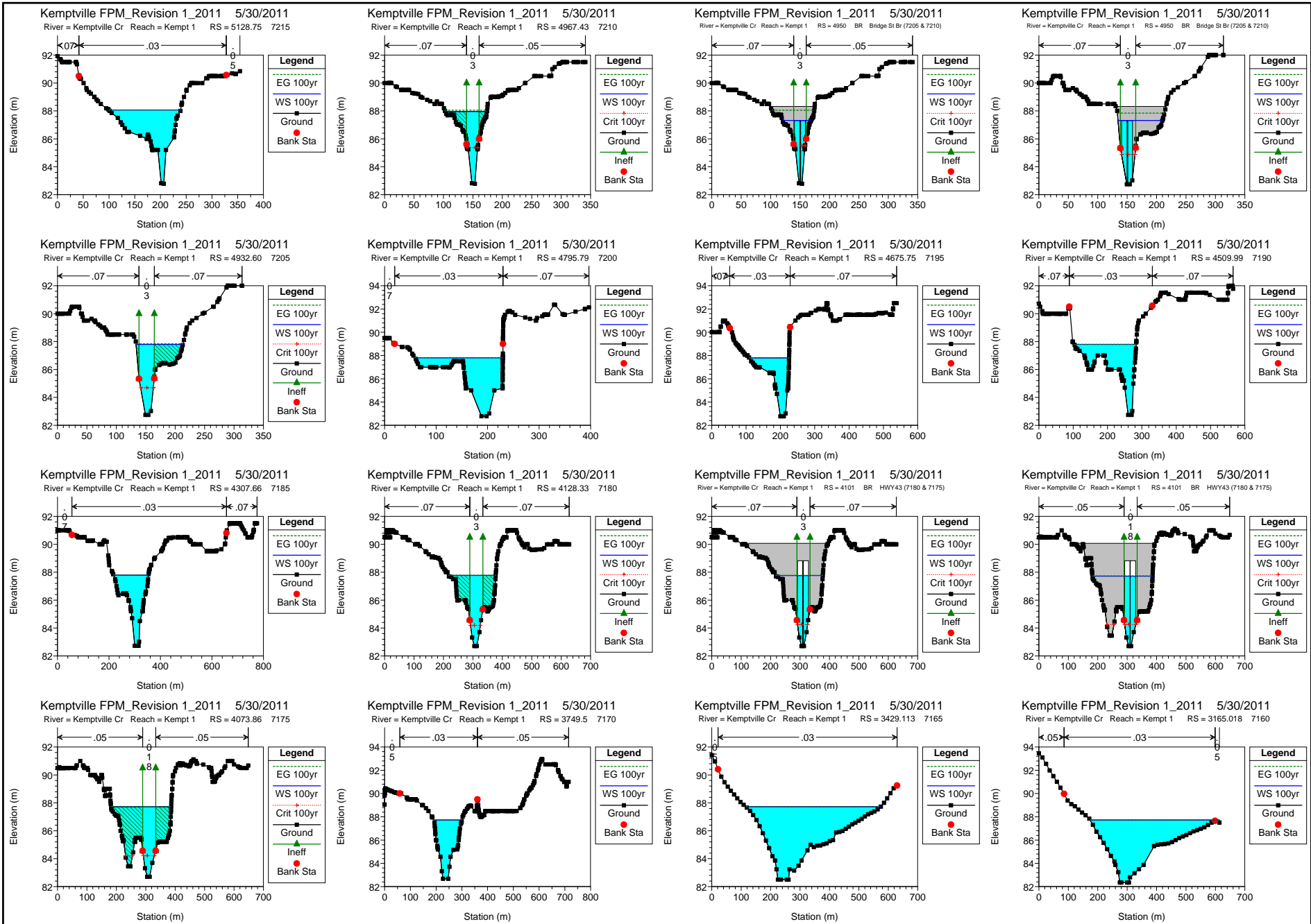


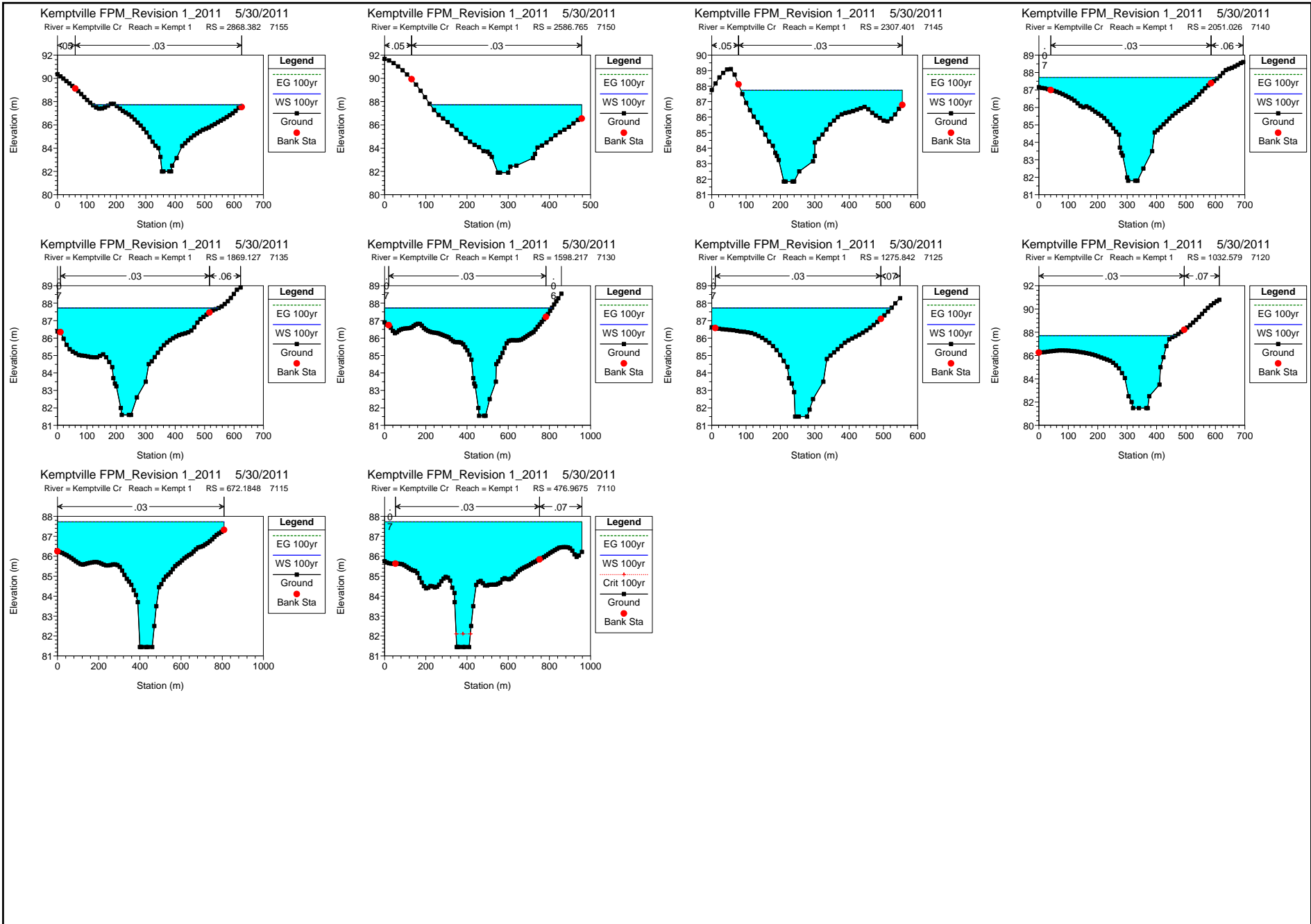
Kemptville Cr Kempt North

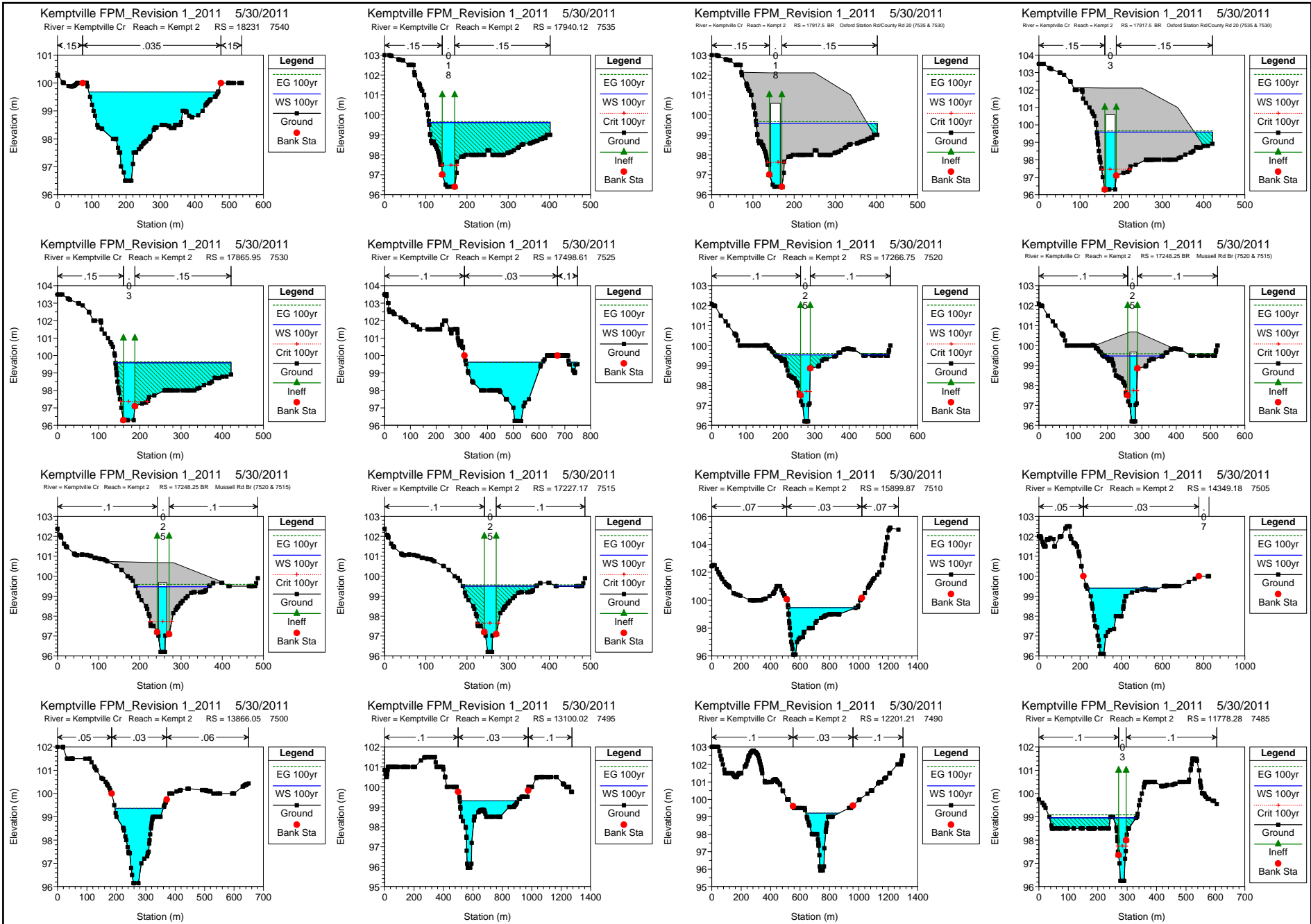


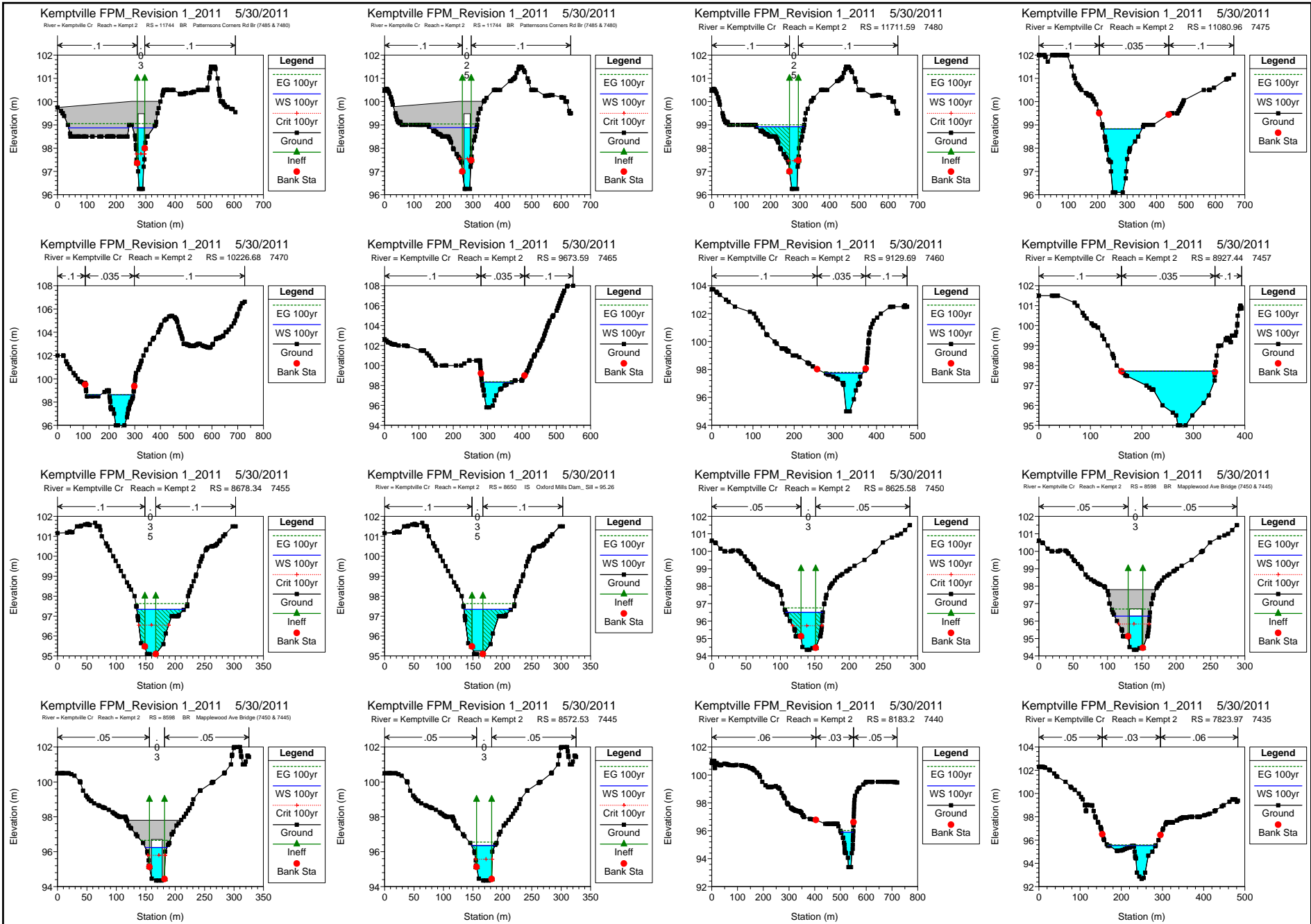


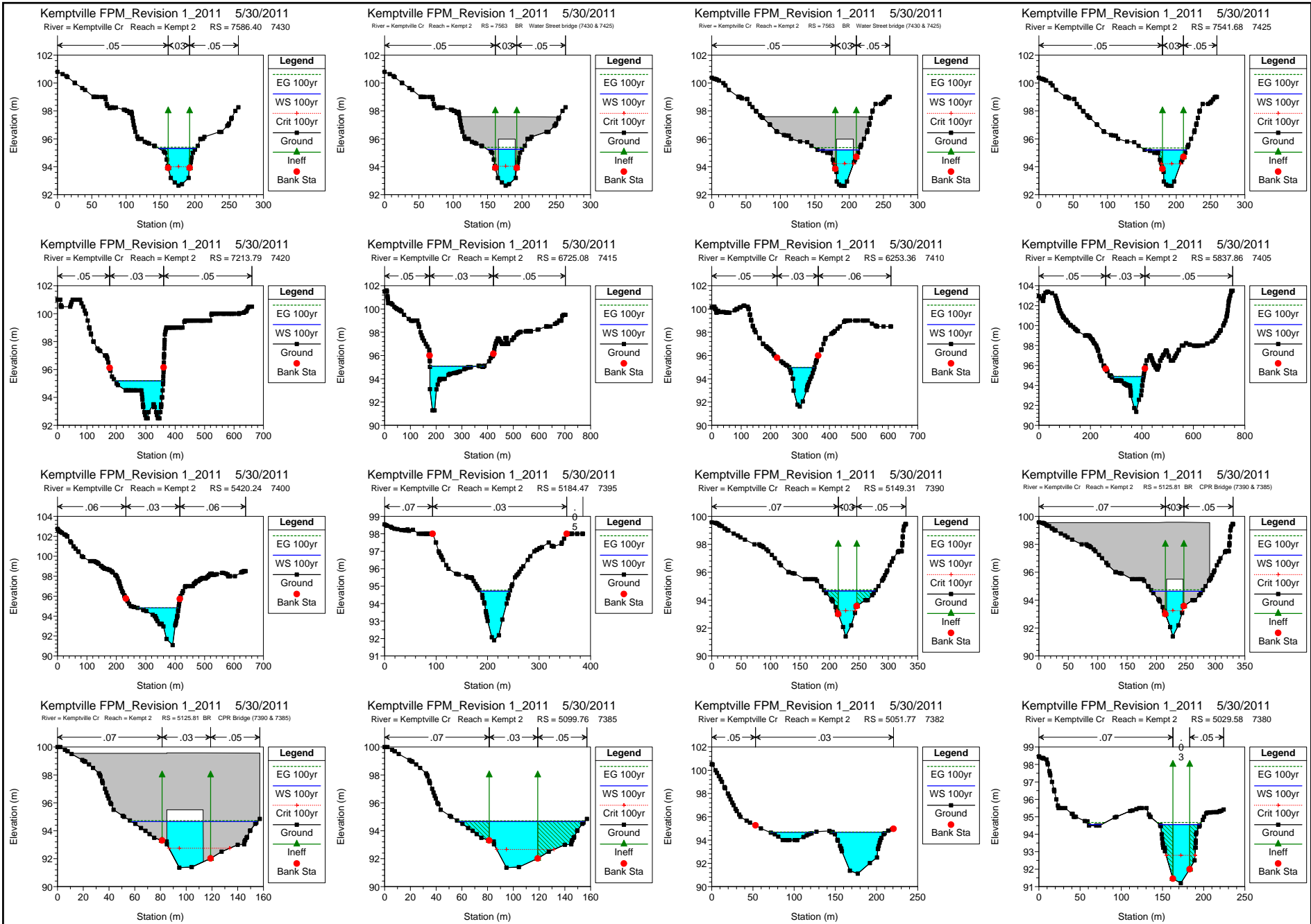


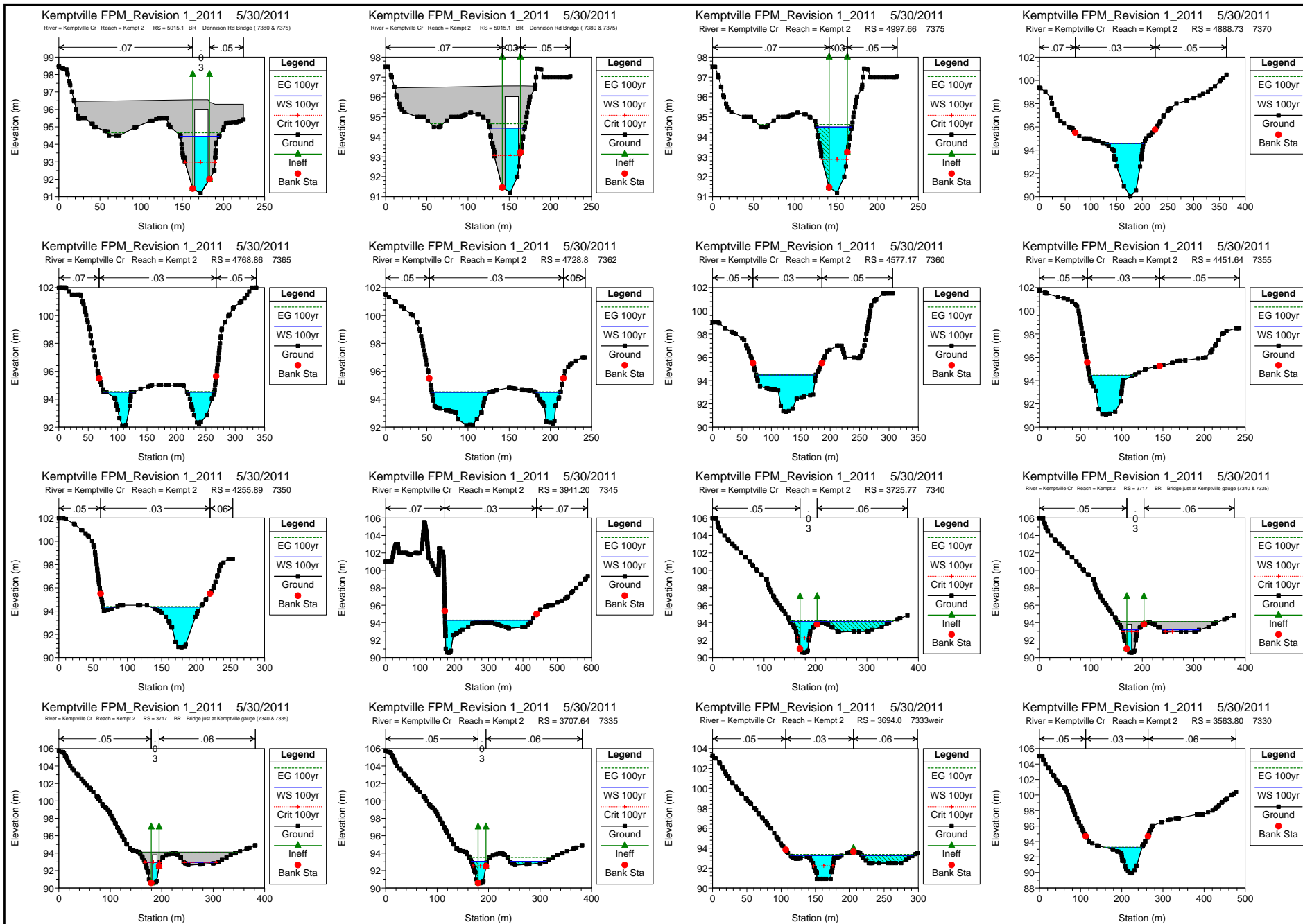


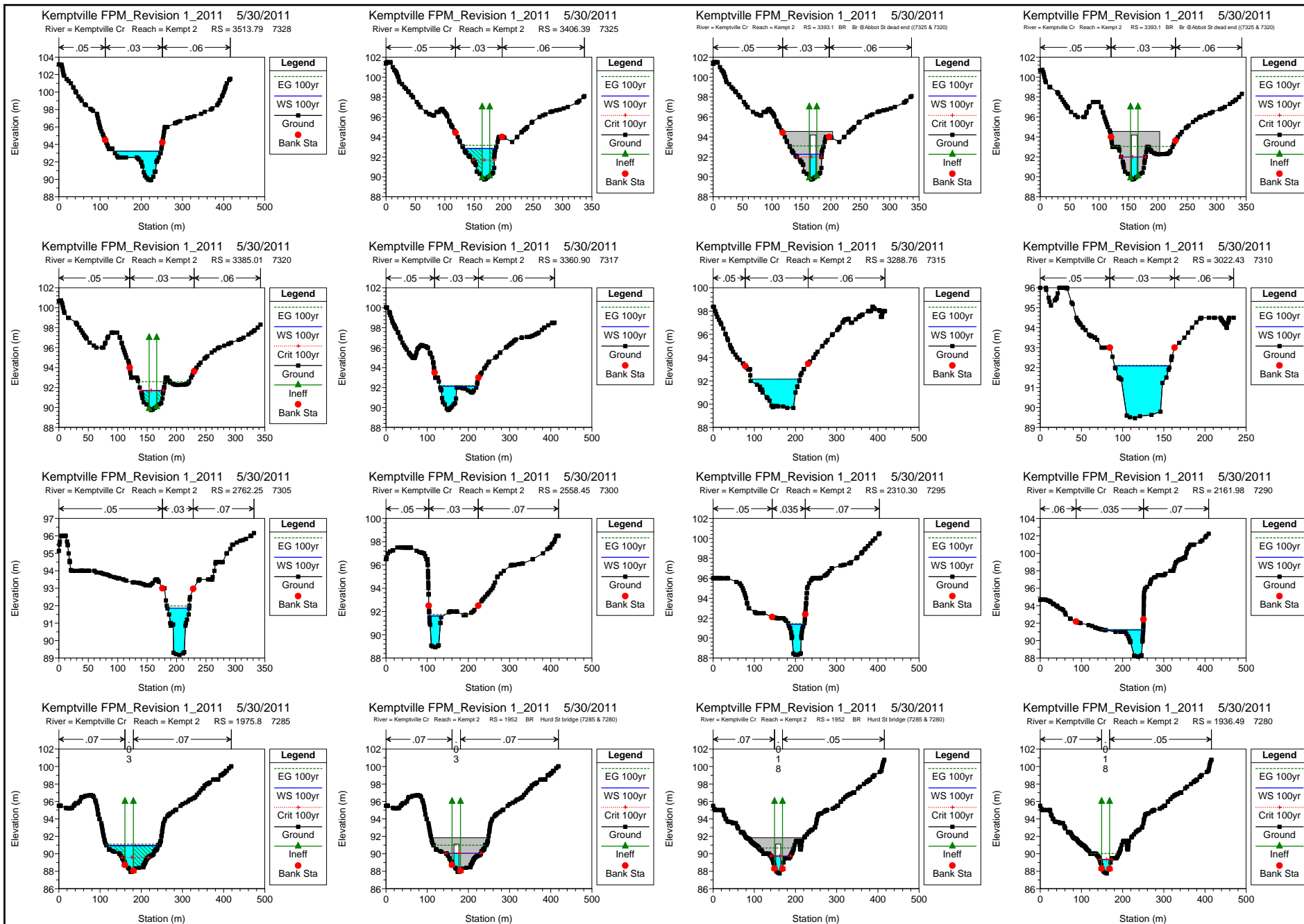


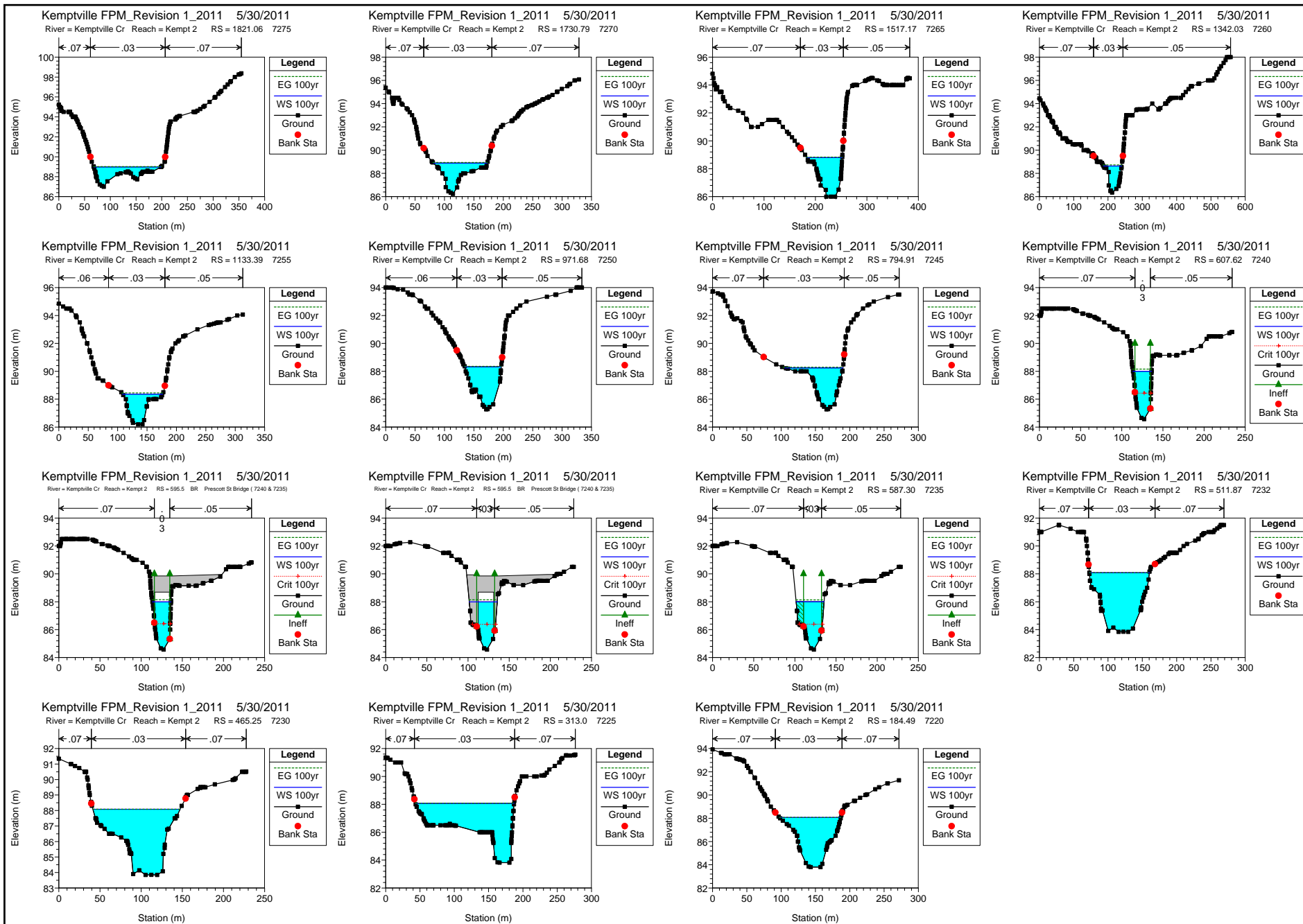


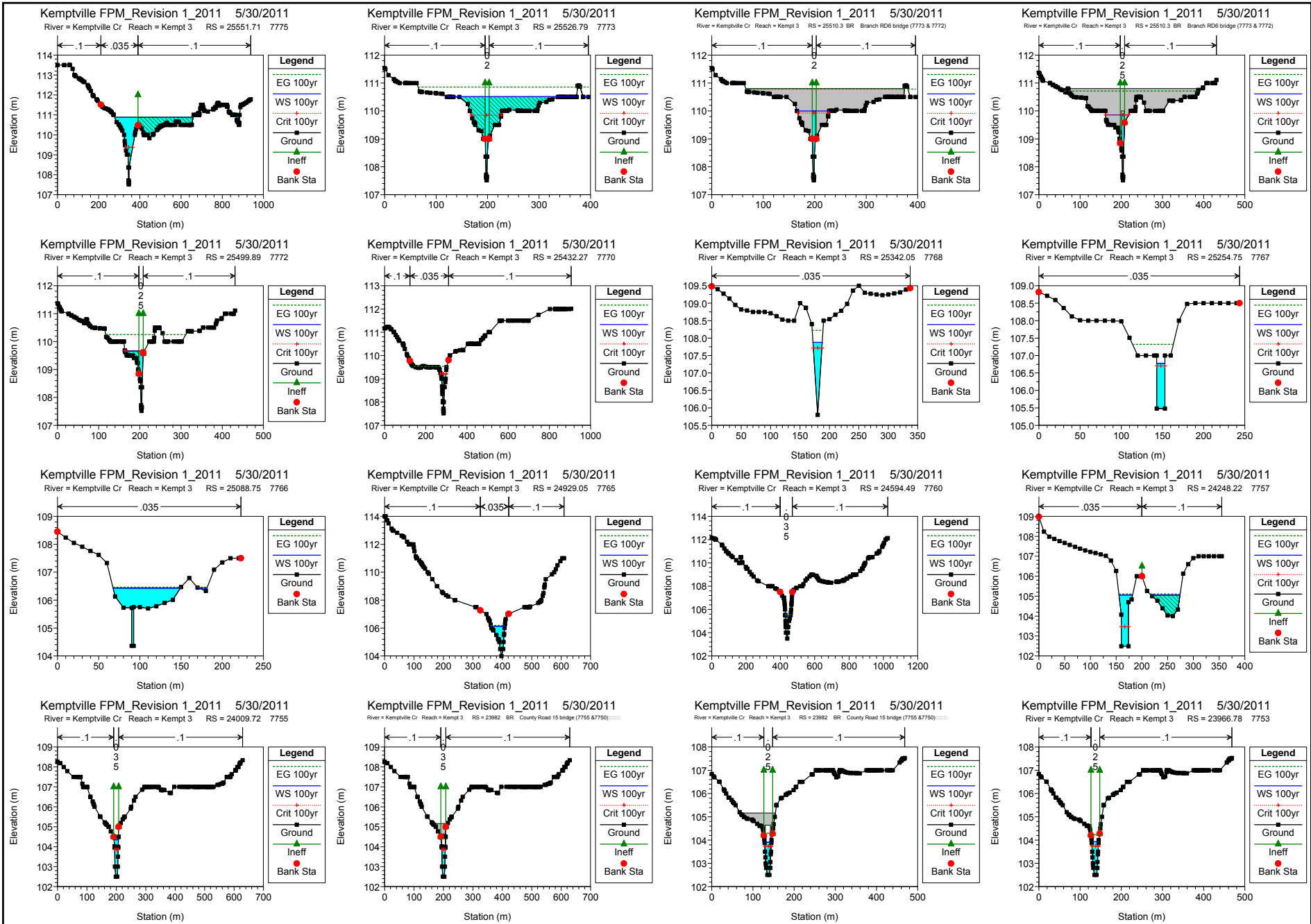


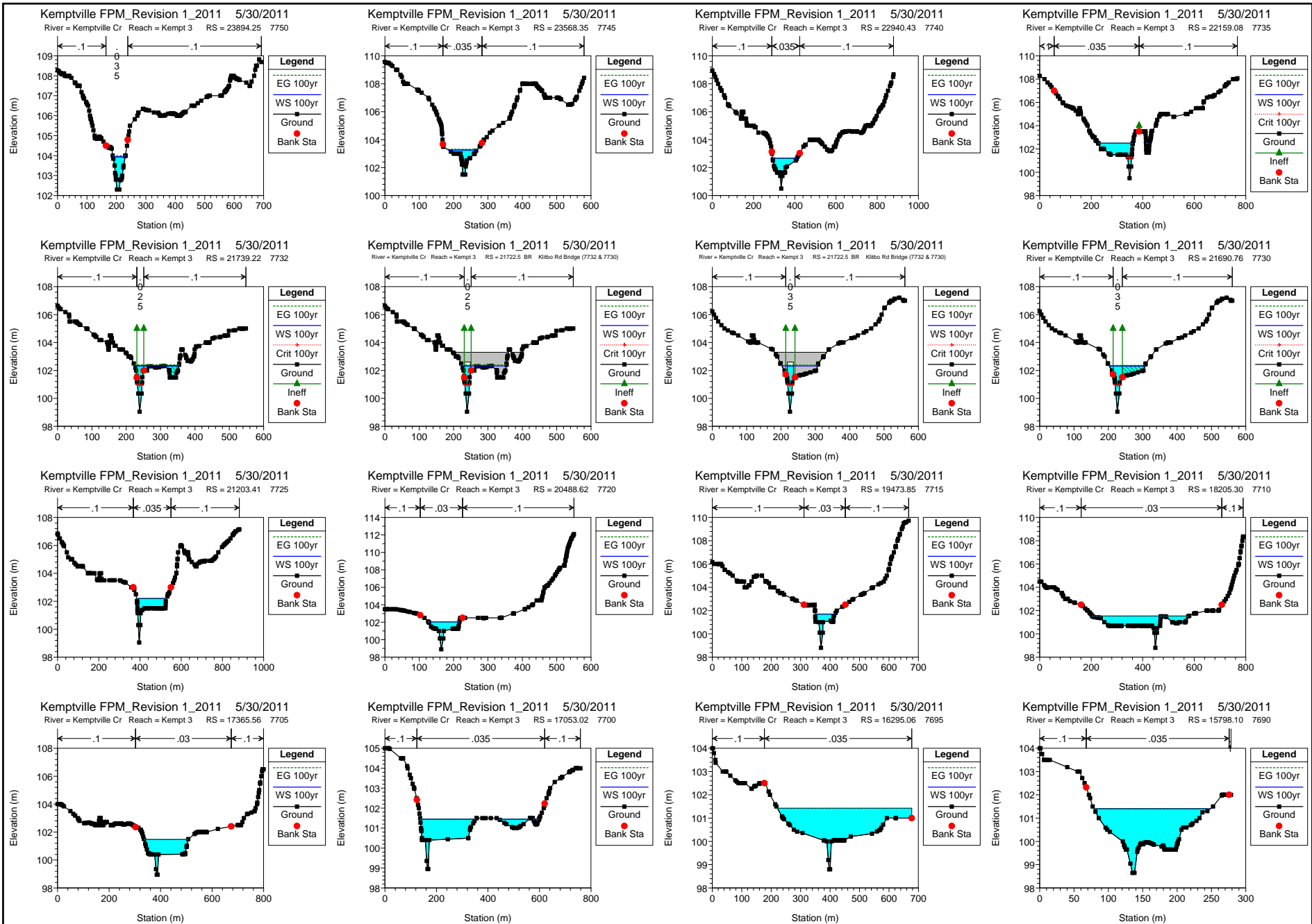


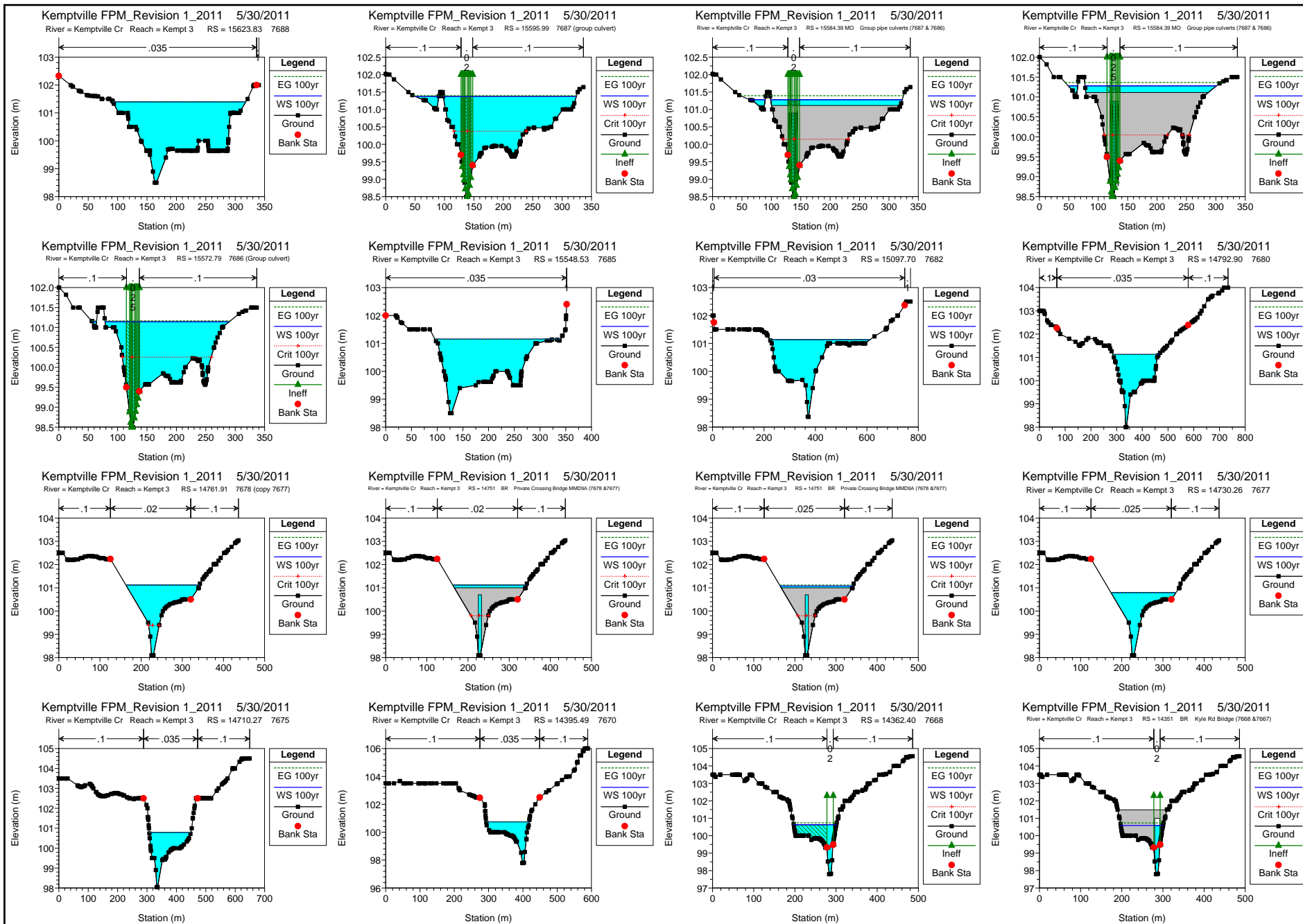


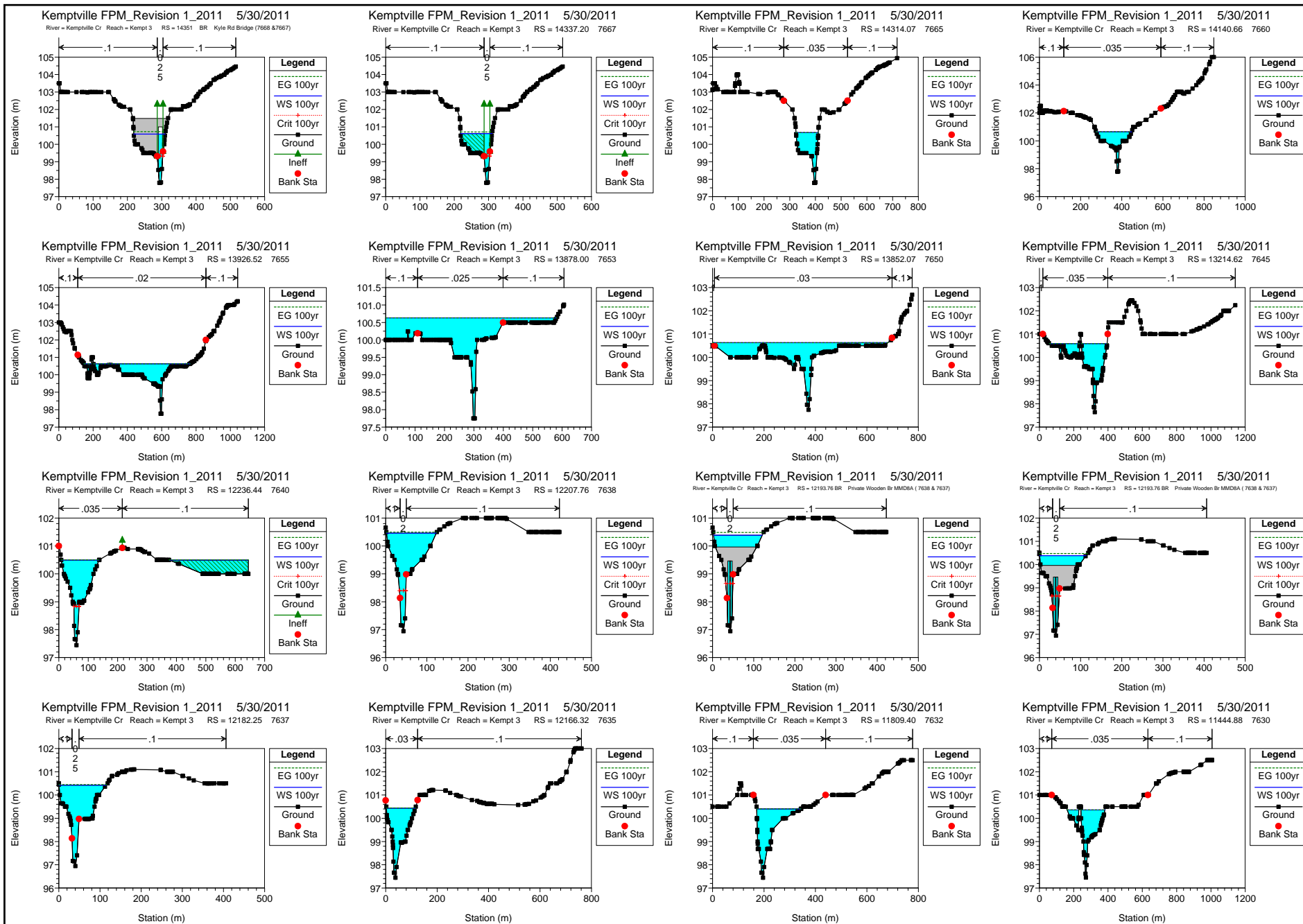


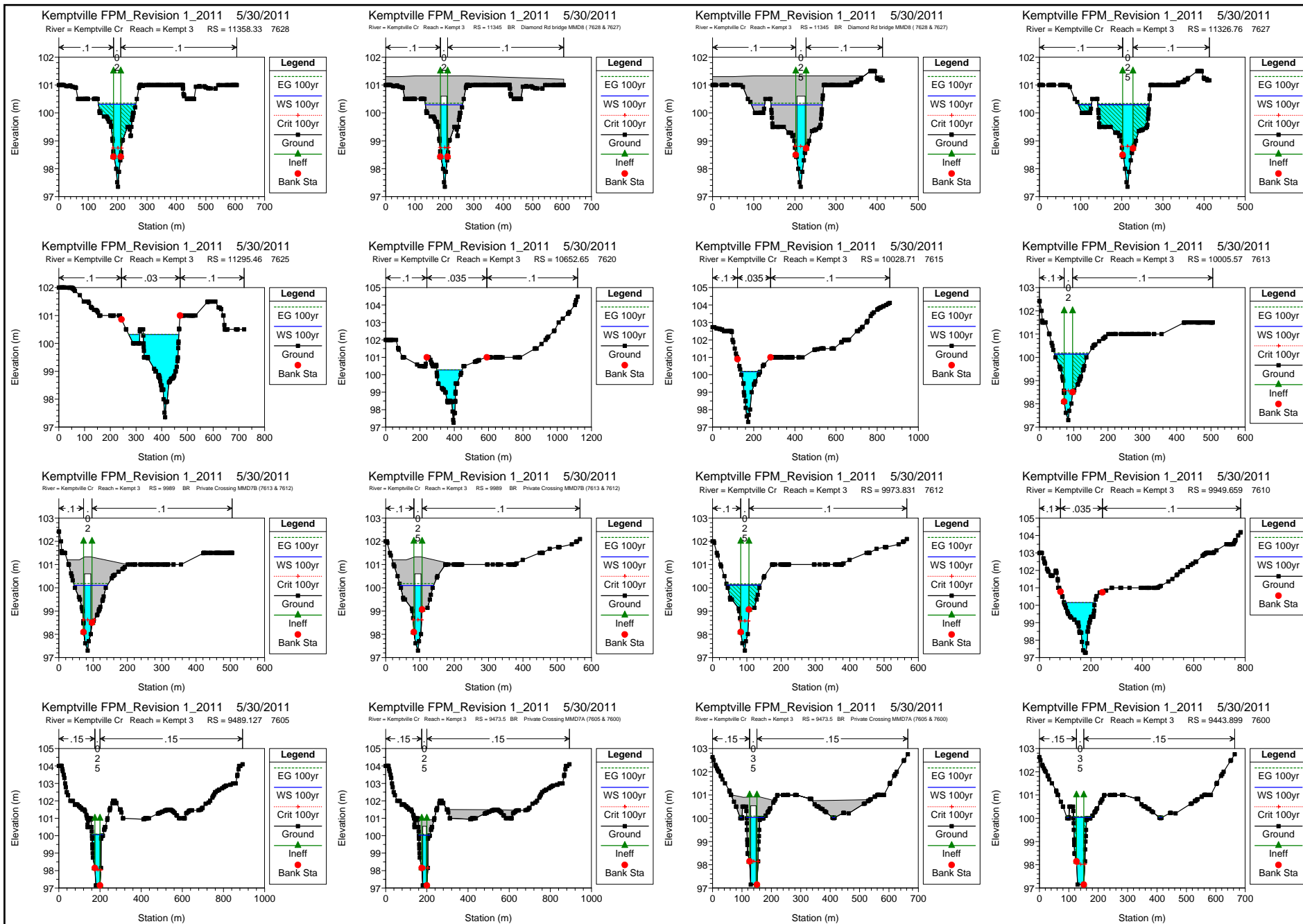


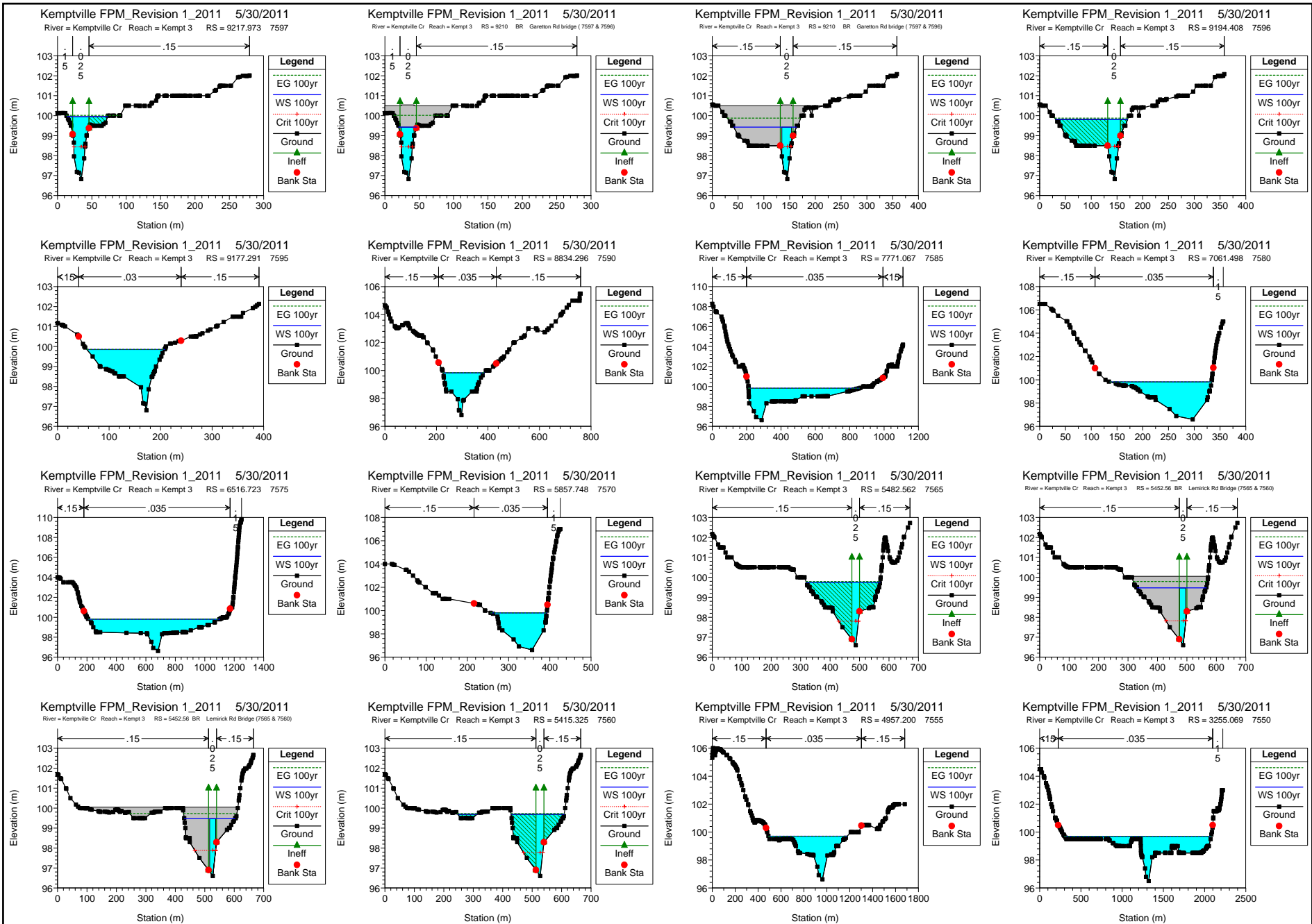


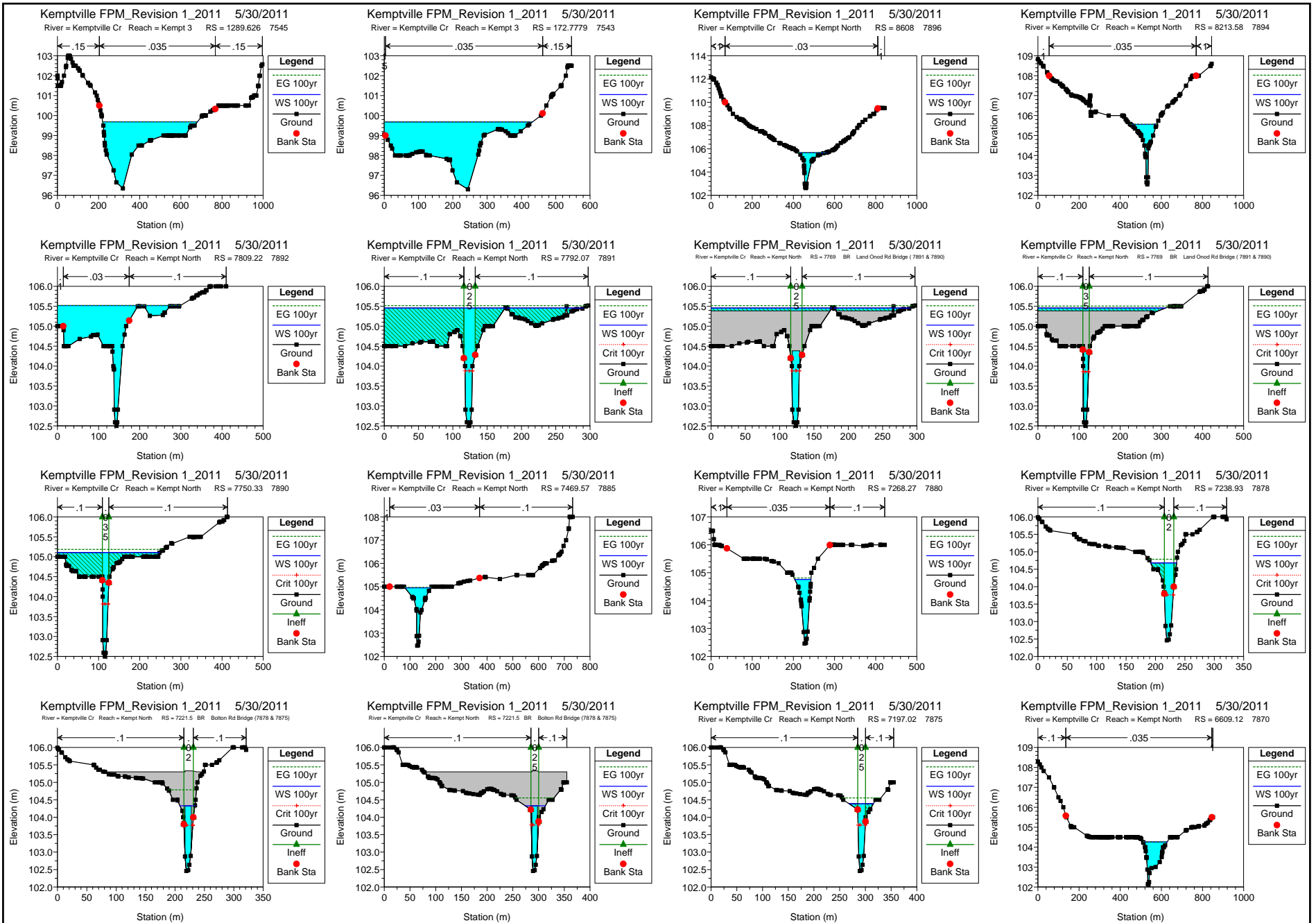


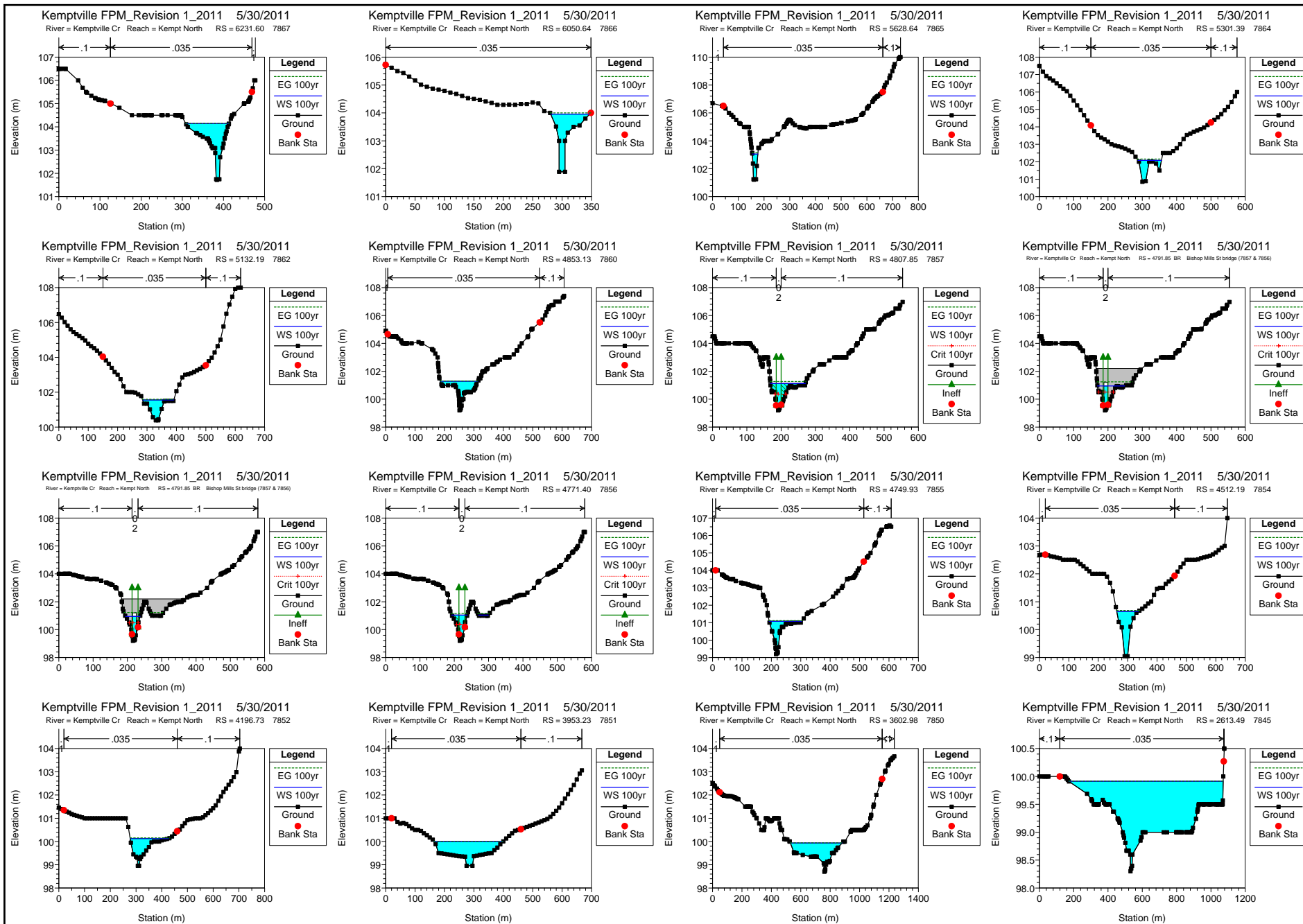


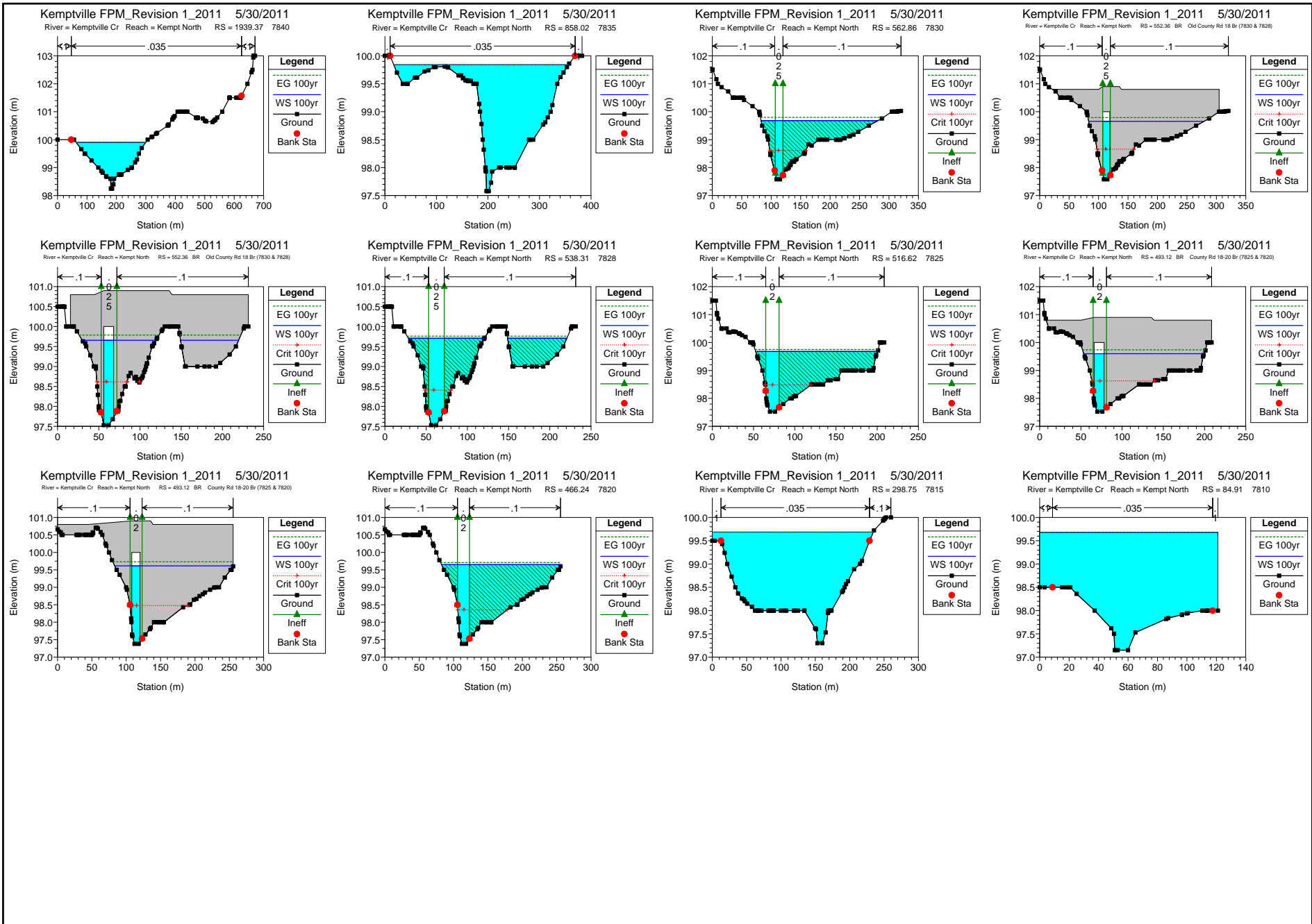


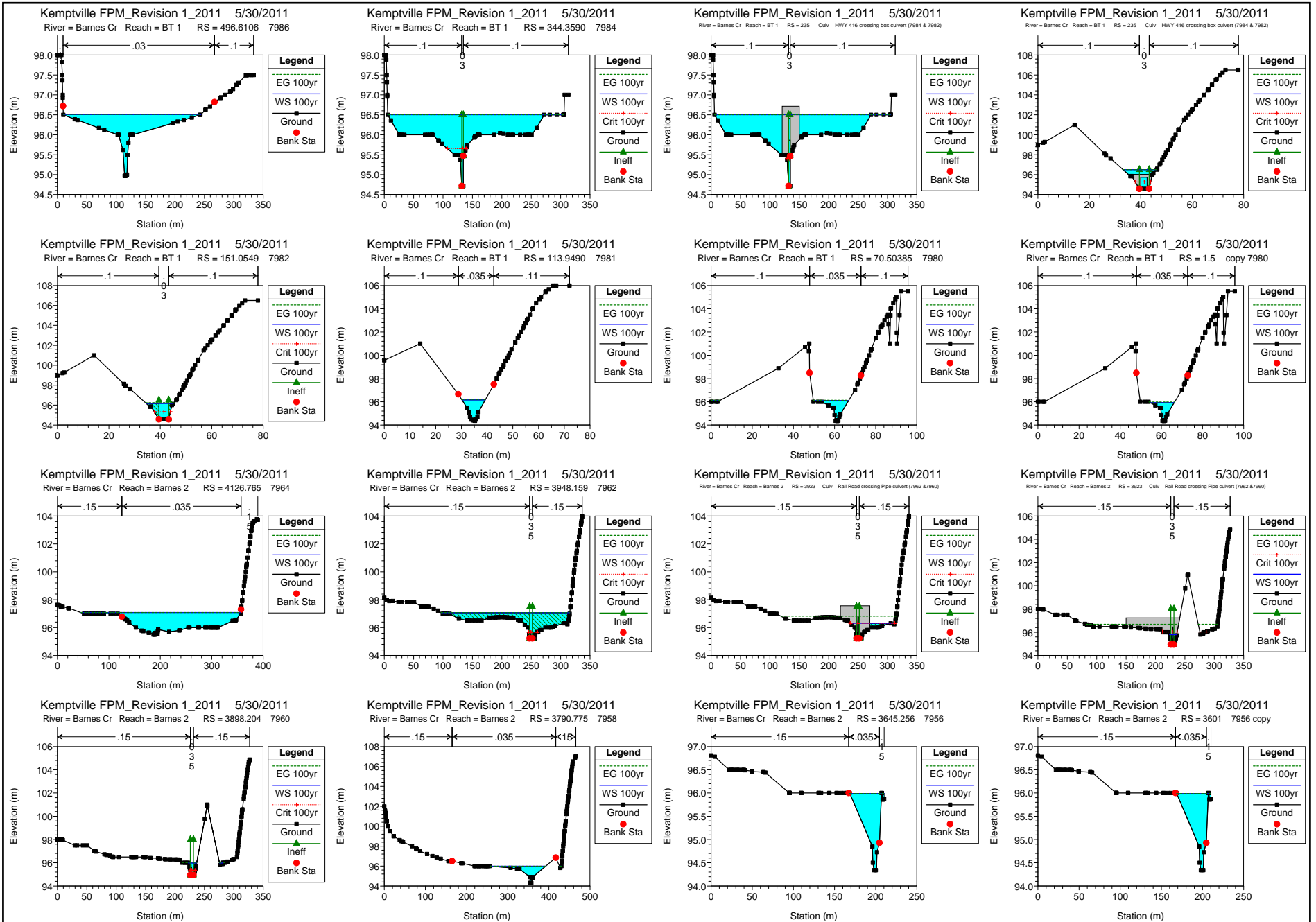


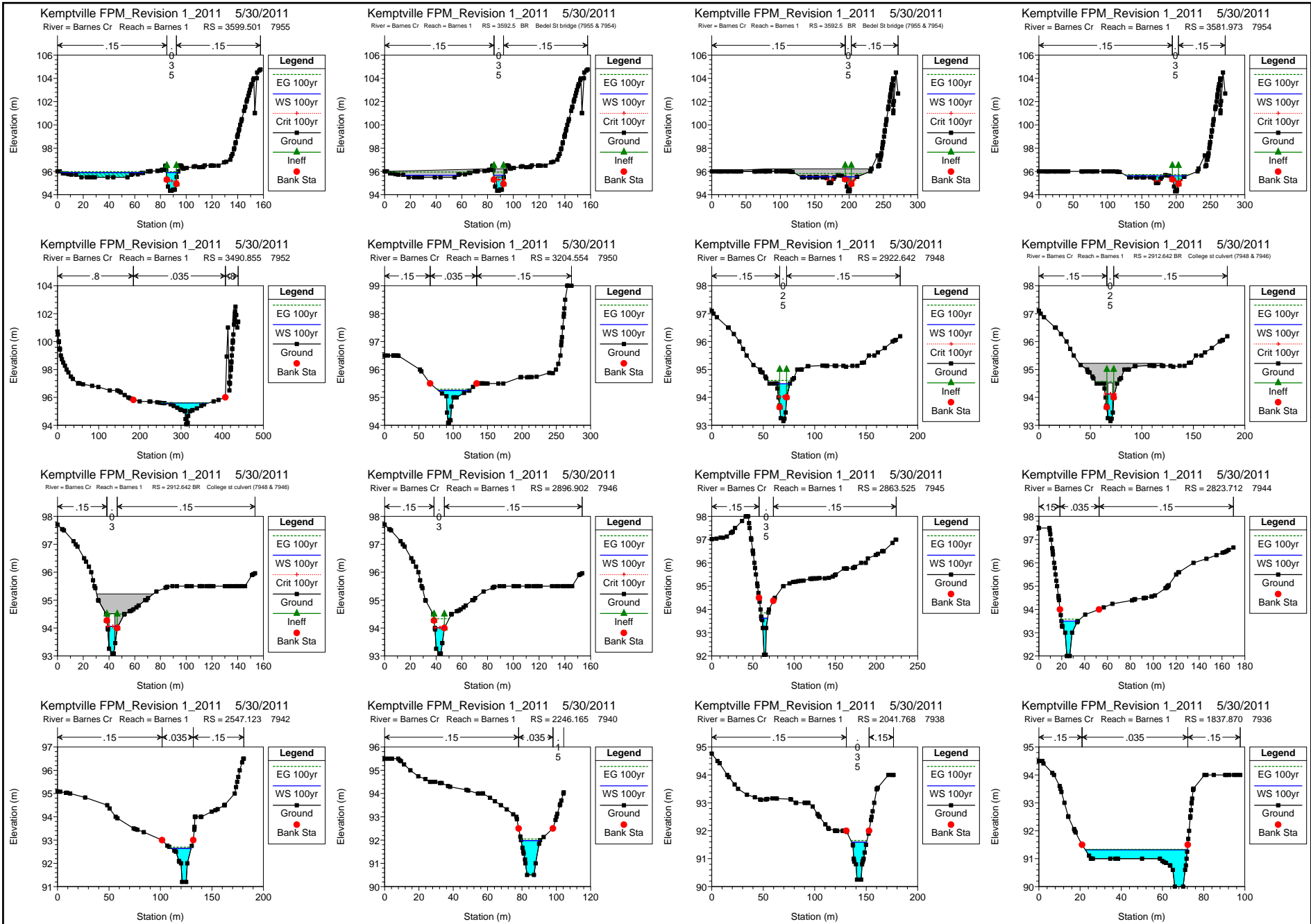


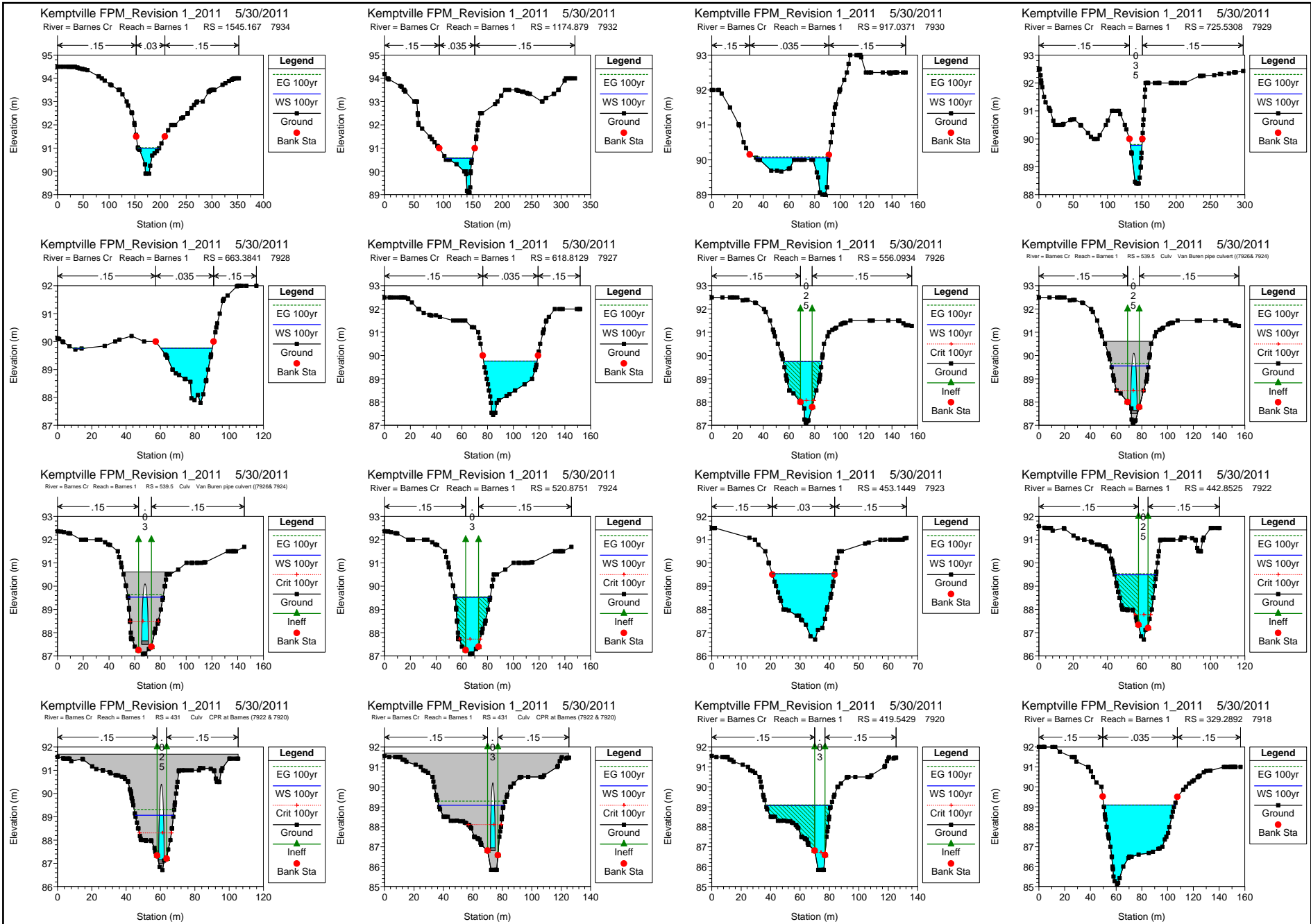




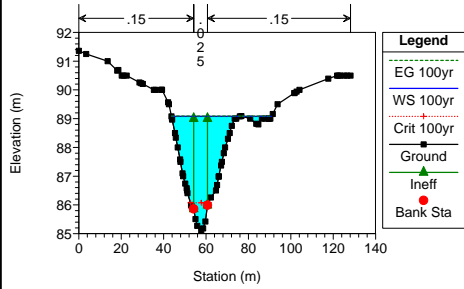




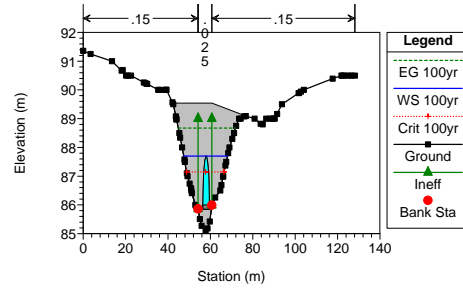




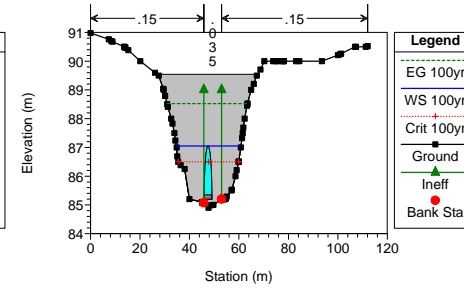
Kemptville FPM_Revision 1_2011 5/30/2011
 River = Barnes Cr Reach = Barnes 1 RS = 239.4731 7916



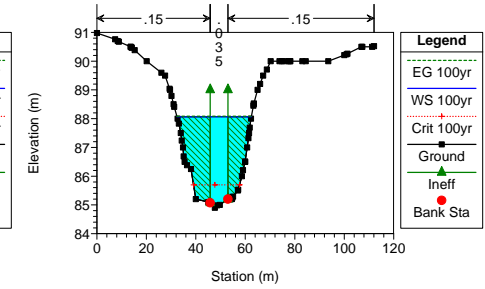
Kemptville FPM_Revision 1_2011 5/30/2011
 River = Barnes Cr Reach = Barnes 1 RS = 219 Culv Parkinson St pipe culvert (7916 & 7914)



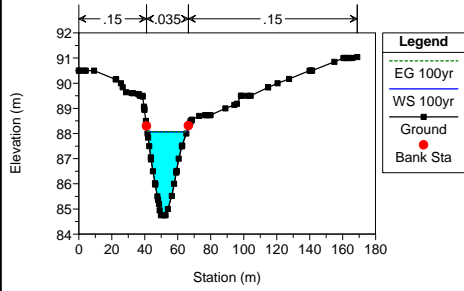
Kemptville FPM_Revision 1_2011 5/30/2011
 River = Barnes Cr Reach = Barnes 1 RS = 219 Culv Parkinson St pipe culvert (7916 & 7914)



Kemptville FPM_Revision 1_2011 5/30/2011
 River = Barnes Cr Reach = Barnes 1 RS = 198.9127 7914



Kemptville FPM_Revision 1_2011 5/30/2011
 River = Barnes Cr Reach = Barnes 1 RS = 148.6161 7912



Kemptville FPM_Revision 1_2011 5/30/2011
 River = Barnes Cr Reach = Barnes 1 RS = 52.10334 7910

